

OFFIC'E'
CATALOGO
GENERALE

General catalogue / Catálogo general / Catalogue général

20
24

Indice

table of contents
índice
table de matières

4.

D1

18.

Informazioni tecniche

Technical information

Datos técnicos

Renseignements techniques

22.

GO

44.

Informazioni tecniche

Technical information

Datos técnicos

Renseignements techniques

52.

LOFT

80.

Informazioni tecniche

Technical information

Datos técnicos

Renseignements techniques

90.

TEKO

126.

Informazioni tecniche

Technical information

Datos técnicos

Renseignements techniques

140.

ET

150.

Informazioni tecniche

Technical information

Datos técnicos

Renseignements techniques

154.

INTRO

170.

Informazioni tecniche

Technical information

Datos técnicos

Renseignements techniques

184.

ARMADI E CONTENITORI

226.

Informazioni tecniche

Technical information

Datos técnicos

Renseignements techniques

Una struttura sintetica che interpreta l'eleganza.

Le due finiture disponibili, ICE e GRIGIO TITANIO, ne ribadiscono il carattere deciso.

L'innovativa matericità del vetro che si declina nelle tonalità assolute delle texture Stone Grey e Calacatta.

Tra le novità della palette dei nobilitati, il Canapa e l'Eucalipto. Scelte cromatiche che puntano all'eleganza.

A synthetic structure which embodies elegance.

The two available finishes, ICE and GRIGIO TITANIO, emphasise the strong look.

The innovative features of glass which reflect the distinctive shades of the Stone Grey and Calacatta textures.

The new colours include Canapa and Eucalipto in melamine finishes. Colour choices which focus on elegance.

Una estructura sintética que interpreta la elegancia.

Los dos acabados disponibles, ICE y GRIGIO TITANIO, ratifican el carácter decidido.

La innovadora materialidad del vidrio que se declina en las tonalidades absolutas de las texturas Stone Grey y Calacatta.

Entre las novedades de la paleta de los ennoblecidos, el Canapa y el Eucalipto. Opciones cromáticas que apuntan a la elegancia.

Une structure synthétique qui interprète l'élégance.

Les deux finitions disponibles, ICE et GRIGIO TITANIO, confirment son caractère fort.

La matérialité innovante du verre qui se décline dans les nuances absolues des textures Stone Grey et Calacatta.

Parmi les nouveautés des palettes en mélaminé, le Canapa et le Eucalipto. Des choix chromatiques qui visent l'élégance.

D1













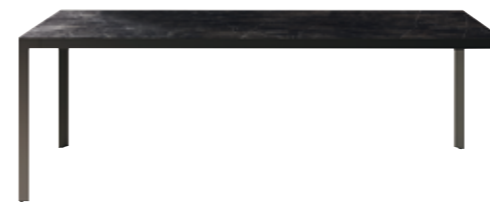
Informazioni tecniche

Technical informations /
 Datos técnicos /
 Renseignements techniques

D1

Scrivanie e tavoli riunione

Desks and meeting desks / Escritorios y mesas de reunión / Bureaux et tables de réunion



Scrivanie /
 Desks /
 Mesas de estudio /
 Bureaux

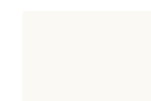
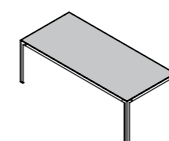
L	P	H
160	90	75
180		
200		
200	100	
220		
240		

Tavoli riunione /
 Meeting tables /
 Mesas de reunión /
 Tables de réunion

L	P	H
120	120	75
240		
360		
480		

Piani in melaminico

Melamine tops / Tableros en melamínico / Plans en mélamine



BIANCO OPACO
B17A



GRIGIO DORIAN
GL4R



ACERO
AC2J



OLMO STORM
OS3Q



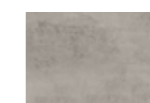
EUCALIPTO
CL1X



ROVERE
PORTOFINO
RP5T



CILIEGIO
BIANCO
CB6K



CEMENTO
MASDAR
CM3Q



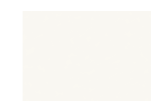
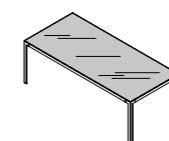
GRIGIO TITANIO
GZ8T



CANAPA
CN1X

Piani in vetro (per scrivanie)

Glass tops (for desks) / Tableros en vidrio (para escritorios) / Plans en verre (pour bureaux)



BIANCO LATTE
WH1M



TITANIO
TT1C



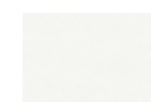
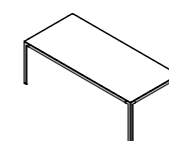
TEXTURE
CALACATTA
TC1A



TEXTURE
STONE GREY
TS1B

Struttura

Structure / Estructura / Structure



ICE
IC2A
(RAL 9010)



GRIGIO TITANIO
GZ8T

Mobili SIGMA

SIGMA units / Muebles SIGMA / Meubles SIGMA

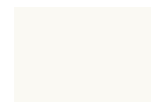
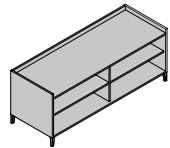


Mobili Sigma /
Sigma units /
Muebles Sigma /
Meubles Sigma

L	P	H
165		
169	59,7	65,2
184		

Cassa

Carcase / Estructura / Structure



BIANCO OPACO
B17A



GRIGIO DORIAN
GL4R



ACERO
AC2J



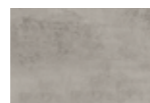
OLMO STORM
OS3Q



ROVERE
PORTOFINO
RP5T



CILIEGIO
BIANCO
CB6K



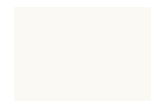
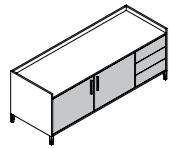
CEMENTO
MASDAR
CM3Q



GRIGIO TITANIO
GZ8T

Facciate

Fronts / Frentes / Façades



BIANCO OPACO
B17A



GRIGIO DORIAN
GL4R



ACERO
AC2J



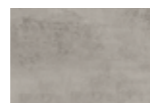
OLMO STORM
OS3Q



ROVERE
PORTOFINO
RP5T



CILIEGIO
BIANCO
CB6K



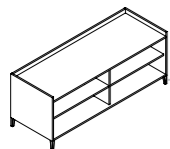
CEMENTO
MASDAR
CM3Q



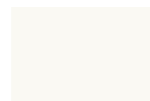
GRIGIO TITANIO
GZ8T

Piedi Sigma

Sigma feet / Pies Sigma / Pieds Sigma



ALLUMINIO
AL1A



BIANCO OPACO
B17A



GRIGIO TITANIO
GZ8T

Mobili di servizio

Service units / Muebles de servicio / Meubles de service

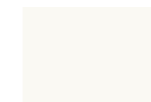
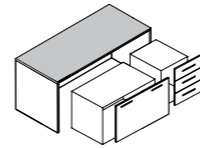


Mobili di servizio /
Service units /
Muebles de servicio /
Meubles de service

L	P	H
93,8		
138,8	59,7	60,5
183,6		

Top, fianchi e schiena

Top, sides and back panel / Encimera, laterales y trasera / Top, côtés et fond



BIANCO OPACO
B17A



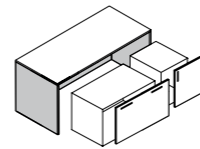
GRIGIO DORIAN
GL4R



ACERO
AC2J



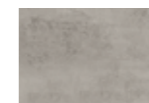
OLMO STORM
OS3Q



ROVERE
PORTOFINO
RP5T



CILIEGIO
BIANCO
CB6K



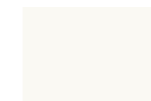
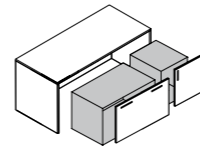
CEMENTO
MASDAR
CM3Q



GRIGIO TITANIO
GZ8T

Cassa

Carcase / Estructura / Structure



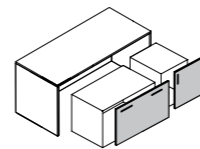
BIANCO OPACO
B17A



GRIGIO DORIAN
GL4R

Facciate

Fronts / Frentes / Façades



BIANCO OPACO
B17A



GRIGIO DORIAN
GL4R



ACERO
AC2J



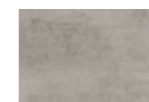
OLMO STORM
OS3Q



ROVERE
PORTOFINO
RP5T



CILIEGIO
BIANCO
CB6K



CEMENTO
MASDAR
CM3Q



GRIGIO TITANIO
GZ8T

Un sistema semi-direzionale tanto versatile quanto eclettico risponde ad esigenze di ogni genere: cambia look a seconda dello stile, cambia forma in funzione dello spazio. Progetto e ricerca si fondono per rispondere ad alti standard di design e funzionalità, non dimenticando l'importanza del concetto di "accessibilità".

A semi-directional system, as versatile as eclectic, meets all kinds of needs: it changes look depending on the style, it changes according to the space. Design and research come together to meet the high standards of design and functionality, not forgetting the importance of the "accessibility" concept.

Un sistema semidireccional tan versátil como ecléctico responde a cualquier tipo de exigencia: cambia de aspecto según el estilo, cambia la forma en función del espacio. Proyecto e investigación se fusionan para responder a los elevados niveles de diseño y funcionalidad, sin olvidar la importancia del concepto de "accesibilidad".

Un système semi-directionnel à la fois polyvalent et diversifié qui répond à tous les types d'exigence: le look change en fonction du style, la forme change en fonction de l'espace. Conception et recherche s'allient pour répondre aux hauts standards de design et de fonctionnalité, en avoir toujours présent à l'esprit l'idée d'"accessibilité".

GO





















Scrivanie

Desks / Escritorios / Bureaux



Scrivanie lineari /
Linear desks /
Escritorios lineales /
Bureaux linéaires

L	P	H
100	60	75
120		
140		
160		
180	60-90	75
200	90	

Scrivanie con sostegno a L /
Desks with "L" shaped support /
Escritorios con soporte en "L" /
Bureaux avec soutien en "L"

L	P	H
200	90-190	75
220		
240		

Scrivanie con mobile di sostegno /
Desks with support units /
Escritorios con muebles de sustentación /
Bureaux avec meubles de soutènement

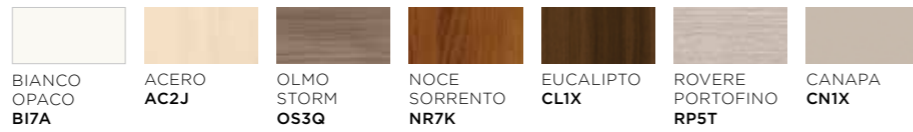
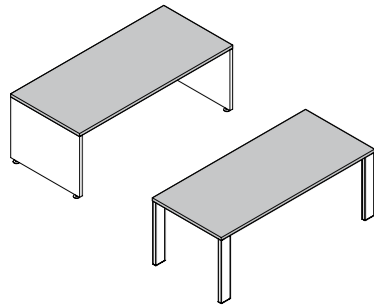
L	P	H
200	178	75
220	90-178	
240		
260		

Scrivanie ad angolo /
Corner desks /
Escritorios rinconero /
Bureaux d'angle

L	P	H
160	190	75
180		
200		

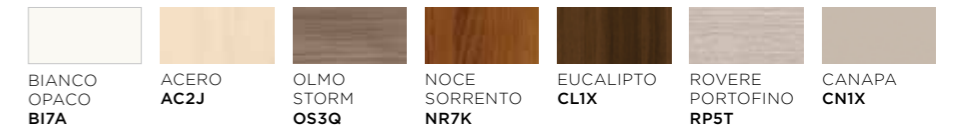
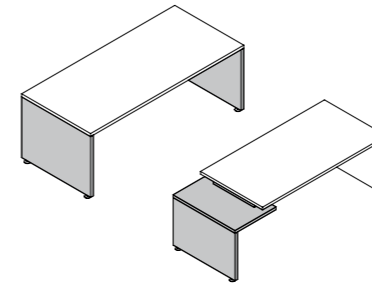
Piano in melaminico

Melamine top / Tablero de melamina / Plan en mélamine



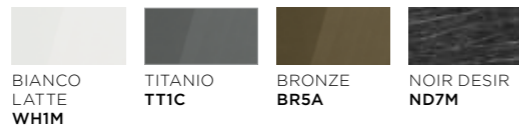
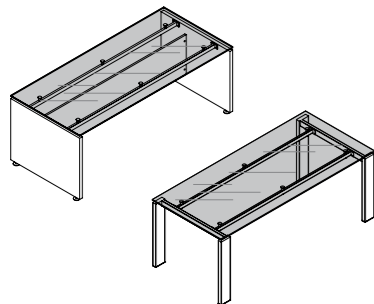
GO EASY - Sostegni in melaminico

Melamine supports / Soportes de melamina / Soutiens en mélamine



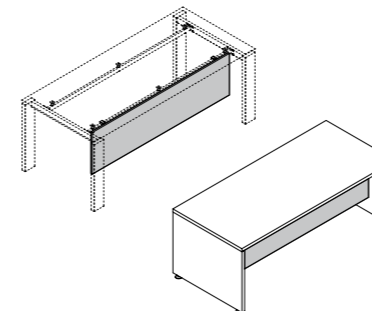
Piano in vetro

Glass top / Tablero de vidrio / Plan en verre



Modesty panel e pannello retro in melaminico

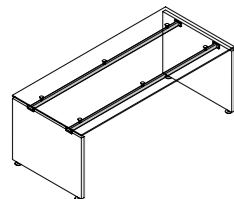
Melamine modesty panel and back panel / Panel modesty y panel posterior de melamina / Panneau modesty et panneau arrière en mélamine



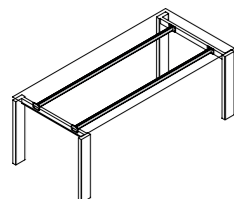
Travi in metallo

Metal beams / Viguetas de metal / Poutres en métal

GO EASY

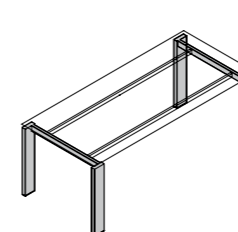


GO STEEL



GO STEEL - Sostegno in metallo

Metal support / Soporte de metal / Soutien en métal



Mobili di sostegno

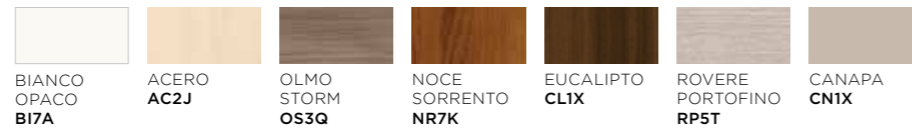
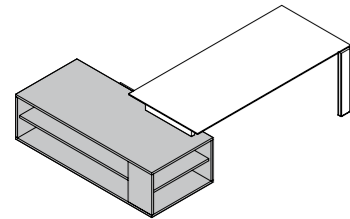
Support units / Muebles de sustentación / Meubles de soutènement



L	P	H
80	90	60,5
60-80	178	

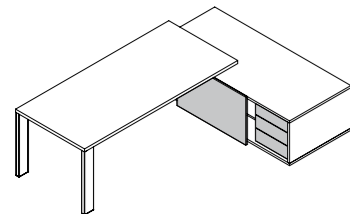
Struttura

Structure / Estructura / Structure



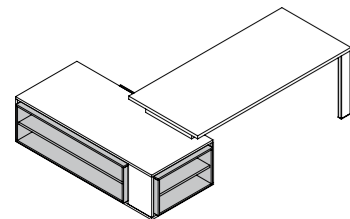
Facciate

Fronts / Frentes / Façades



Inserto

Insert / Inserto / Insert



Mobili di servizio

Service units / Muebles de servicio / Meubles de service

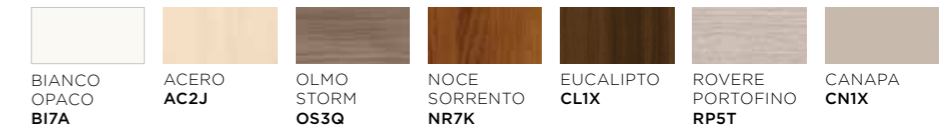
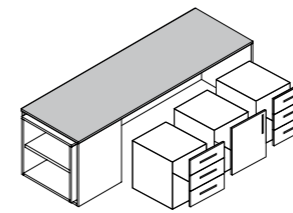


L	P	H
93,8	59,7	60,5
136,9		
138,8		
181,8		
183,8		
226,7		

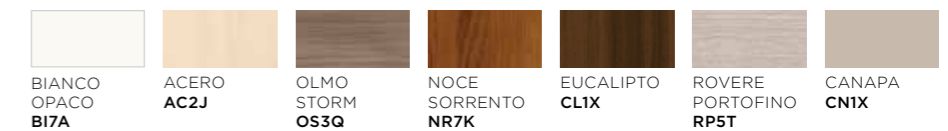
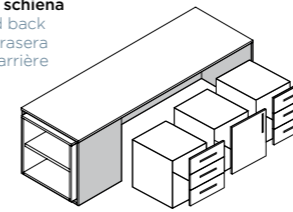
Struttura

Structure / Estructura / Structure

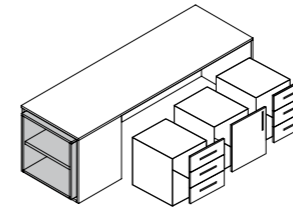
Top
Top
Encimera
Top



Fianchi e schiena
Sides and back
Lados y trasera
Côtés et arrière



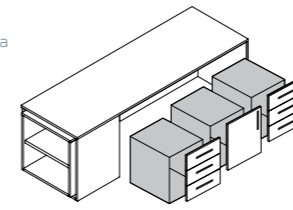
Inserto
Insert
Insert



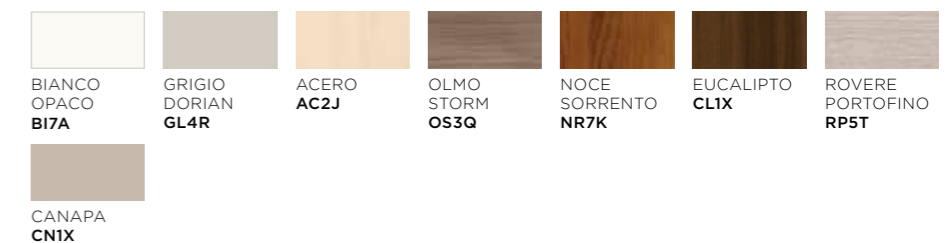
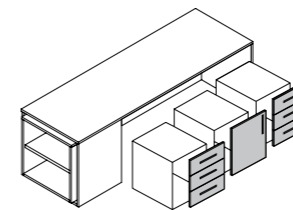
Elementi mobili di servizio

Elements for service units / Elementos para muebles de servicio / Éléments pour meubles de service

Cassa
Carcase
Estructura
Structure



Facciate
Fronts
Frentes
Façades



Tavoli riunione

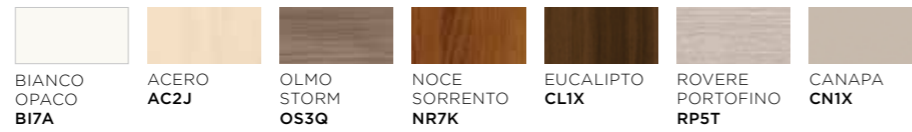
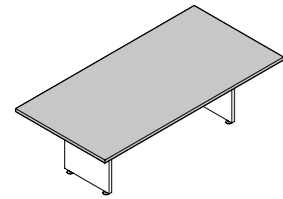
Meeting tables / Mesas de reunión / Tables de réunion



L	P	H
120	120	75
150	150	
240	120-150	
260		
280		
300		
320	150	
340		
360		
380		
400		

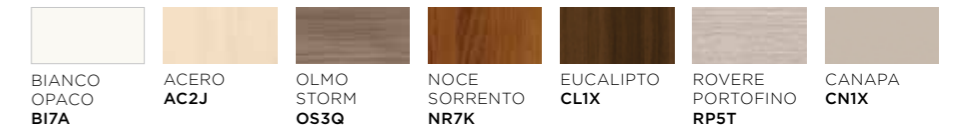
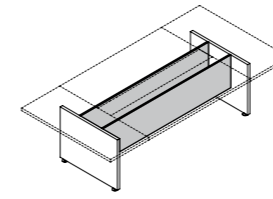
Piano in melaminico

Melamine tops / Tablero de melamina / Plan en mélamine



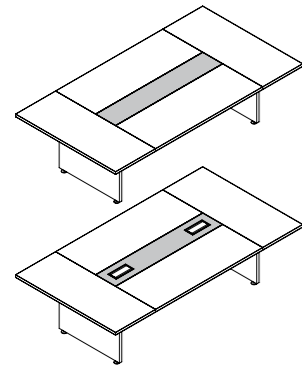
GO EASY - Traversa in melaminico

Melamine crossbeam / Traversaño de melamina / Traverse en mélamine



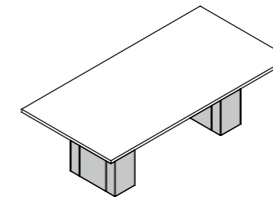
Copertura in melaminico

Melamine overlay / Cubierta de melamina / Couverture en mélamine



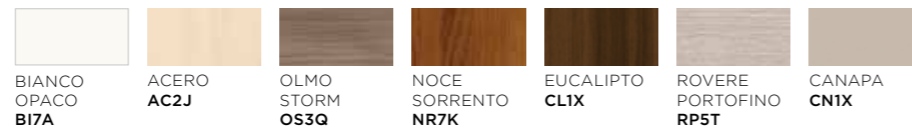
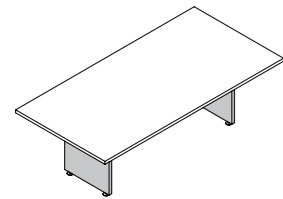
GO STEEL - Sostegno in metallo

Metal support / Soporte de metal / Soutien en métal



GO EASY - Sostegno in melaminico

Melamine support / Soporte de melamina / Soutien en mélamine



Senza troppo rumore ogni architettura può essere sottolineata da elementi tanto semplici quanto caratterizzanti per forme e colori.

Il minimal è stato definito eleganza assoluta descrivendo il non-stile come una dimensione di design personale, flessibile, oltre il tempo.

Sempre attuale: ovunque sia il tuo spazio, qualunque sia la tua città, chiunque tu sia.

Without making too much fuss, every style of architecture can be emphasised with simple elements.

That still manage to add character thanks to their shape and colour. The minimalist style has been defined absolute elegance: non-style become an aspect of a personal, flexible design that goes beyond time.

Always up-to-date: wherever your space, whatever your city.

Sin demasiado estruendo cada arquitectura puede destacarse gracias a elementos simples y a la vez distintivos debido a sus formas y colores.

El estilo minimal ha sido definido como la elegancia absoluta, describiendo al "no-estilo" como una dimensión de diseño personal, flexible, más allá del tiempo. Siempre actual: dondequiera esté tu espacio, cualquiera sea tu.

Tout en douceur, chaque style peut être mis en valeur par des éléments simples, mais qui se distinguent par leur forme et leurs couleurs. La sobriété est synonyme d'élégance absolue, expression d'un design personnel, flexible et intemporel.

Toujours actuel, qui que vous soyez, quel que soit votre style et l'endroit où vous habitez.

LOFT



























Scrivanie, workstation e bench

Desks, workstation and bench / Escritorios, workstation y bench / Bureaux, workstation et banc



Scrivanie /
Desks /
Escritorios /
Bureaux

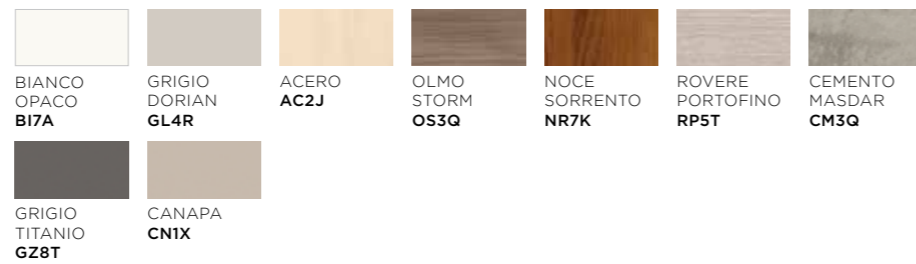
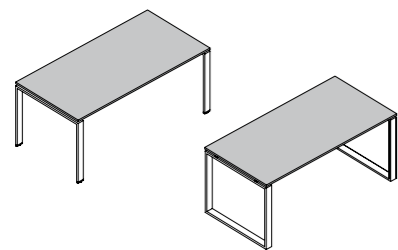
L	P	H
80	60 - 80 160,8	75 - 75,7
100		
120		
140		
160		
180		
200	100	75 - 75,7

Workstation /
Workstation /
Workstation /
Workstation

L	P	H
160	160	75 - 75,7

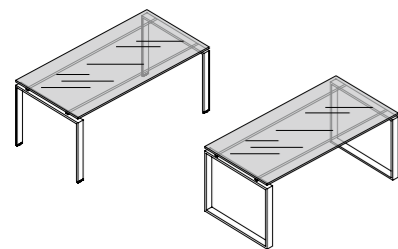
Piano in melaminico

Melamine tops / Tablero de melamina / Plan en mélamine



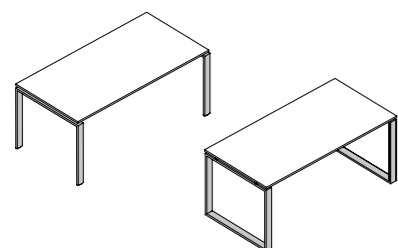
Piani in vetro

Glass tops / Tableros de vidrio / Plans en verre



Sostegni

Supports / Soportes / Supports



Schermi divisori e modesty panel

Divider screens and modesty panel / Pantallas divisorias y panel modesty / Cloisons de séparation et panneaux modesty



Schermi in melaminico /
Melamine screens /
Pantallas de melamina /
Écrans en mélaminé

L	P	H
60	1,8 - 2,5	29,7 - 32,2
80		
100		
120		
140		
160		
180		
200		

Schermi fonoassorbenti /
Sound-absorbing screen /
Pantallas fonoabsorbentes /
Écrans acoustiques

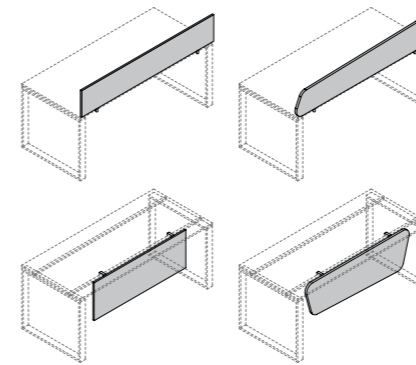
L	P	H
80	3	29,5 - 40
120		
140		
160		

Modesty panel /
Modesty panel /
Modesty panel /
Panneau modesty

L	P	H
60	1,8 - 2,5	44,7 - 72,2
80		
100		
120		
140		
160		
180		

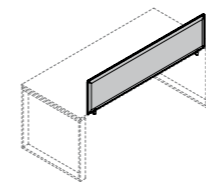
Schermo divisorio lineare/sagomato e modesty panel lineare/sagomato in melaminico

Melamine linear/shaped divider screen and linear/shaped modesty panel / Pantalla divisoria lineal/conformada y panel modesty lineal/conformado de melamina / Cloison de séparation linéaire/façonné et panneau modesty linéaire/façonné en mélamine



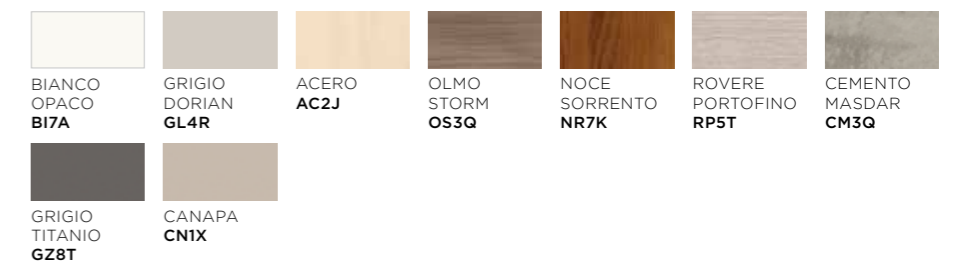
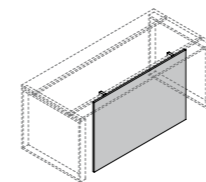
Schermo divisorio fonoassorbente in tessuto

Sound-absorbing fabric divider screen / Pantalla divisoria de tela de absorción de sonido / Cloison de séparation de tissu insonorisant



Modesty panel lineare a terra in melaminico

Melamine linear floor standing modesty panel / Panel modesty lineal de suelo de melamina / Panneau modesty linéaire au sol en mélamine



Cassettiere base

Bases with drawers / Bases con cajones / Bases avec tiroirs

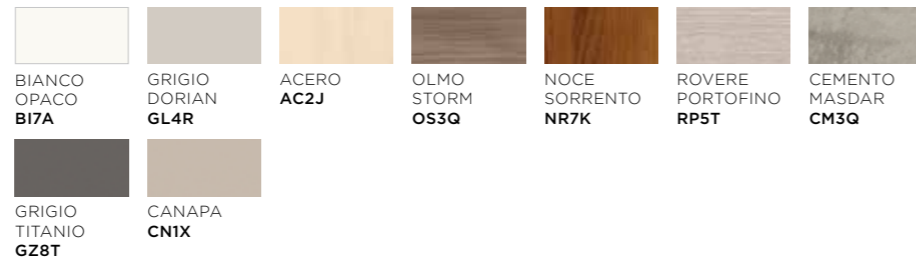
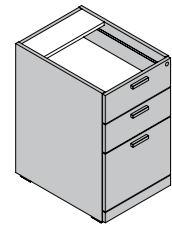


Cassettiere /
Drawer units /
Cajoneras /
Caissons à tiroirs

L	P	H
41,8	56,4 - 79,6	73,2

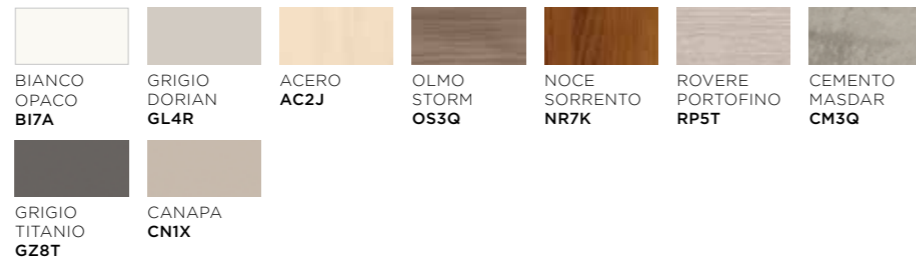
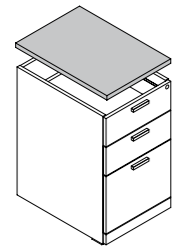
Cassa e frontali

Carcase and front panels / Estructura y frentes / Caisson et façades



Top di finitura

Finishing top / Encimera de acabado / Top de finition



Mobili SWING

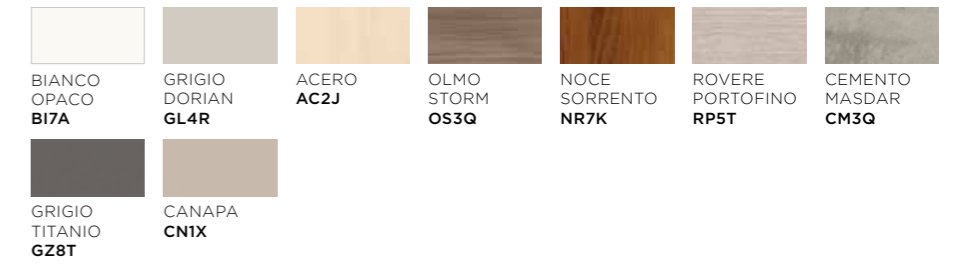
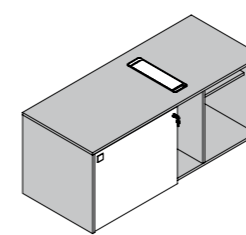
SWING units / Muebles SWING / Meubles SWING



L	P	H
144	59,7	62,5

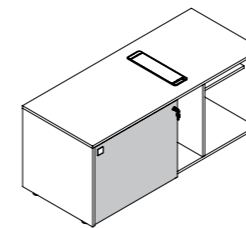
Cassa

Carcase / Estructura / Structure



Facciate

Fronts / Frentes / Façades



Mobili di servizio

Service units / Muebles de servicio / Meubles de service



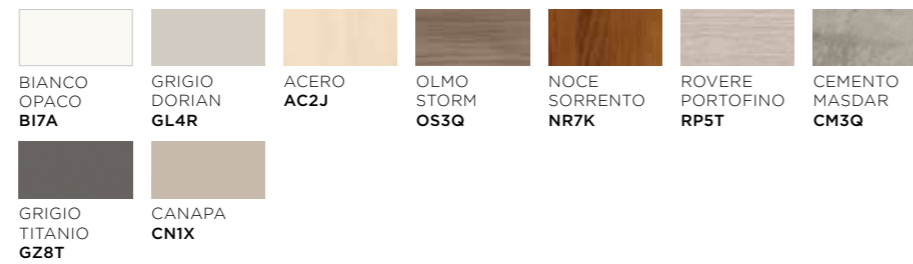
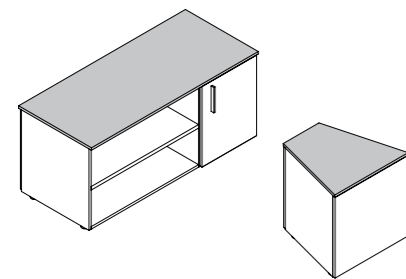
L	P	H
91,9	59,7	62,5
136,8		
181,8		

Elemento 30°/
30° element /
Elemento 30 /
Élément 30°

L	P	H
60,1	57,7	62,5

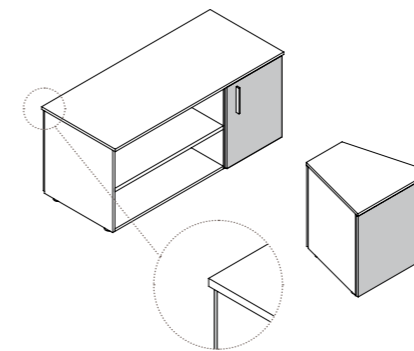
Top

Top / Encimera / Top



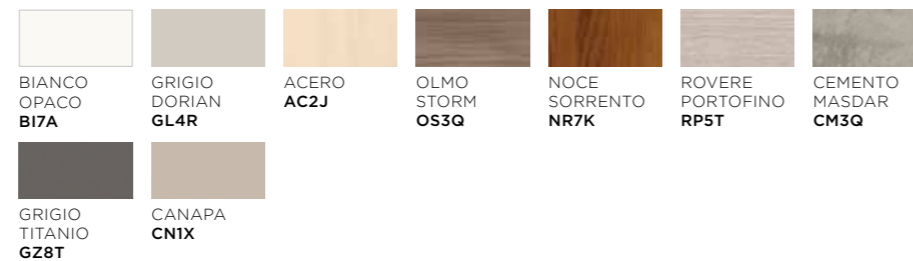
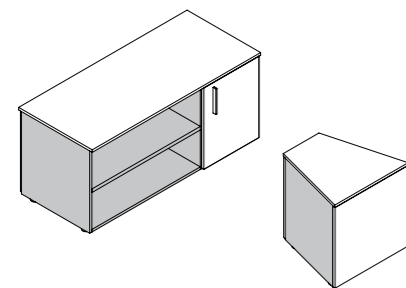
Ante e retro

Doors and rear / Puertas y parte posterior / Portes et fond



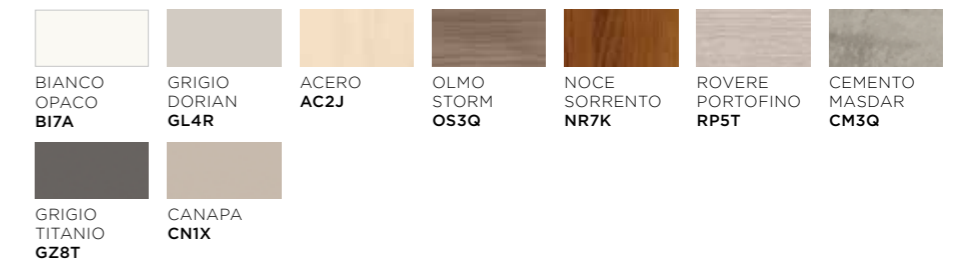
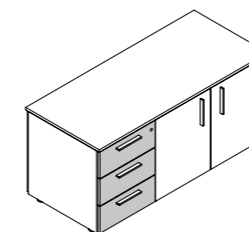
Cassa

Carcase / Estructura / Structure



Cassetti

Drawers / Cajones / Tiroirs

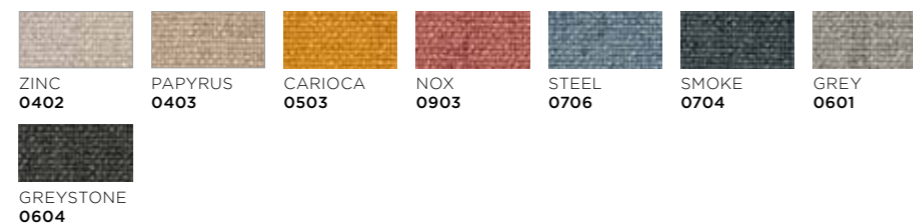
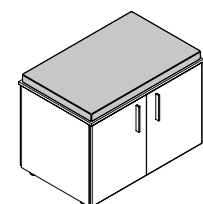


Cuscini per mobili portanti

Cushions for supporting elements / Cojines para muebles portantes / Coussins pour meubles porteurs

Cuscini P 57 in tessuto Jenny. Sfoderabili

Cushions D 57 in Jenny fabric. Removable covers / Cojines P 57 en tejido Jenny. Desenfundables / Coussins P 57 en tissu Jenny. Déhoussables



Mobili BRIDGE

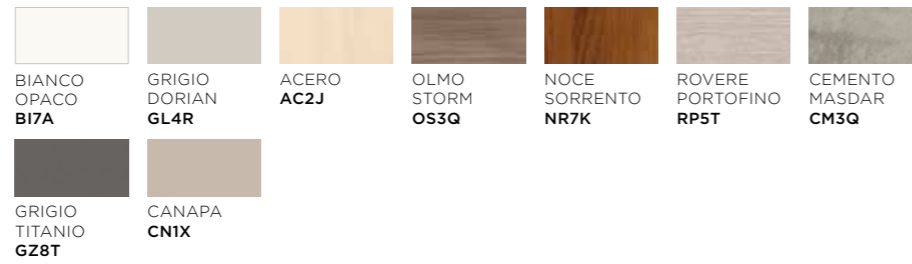
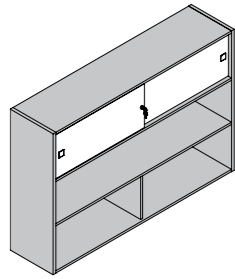
BRIDGE units / Muebles BRIDGE / Meubles BRIDGE



L	P	H
145,2	39,4	112,5
166		

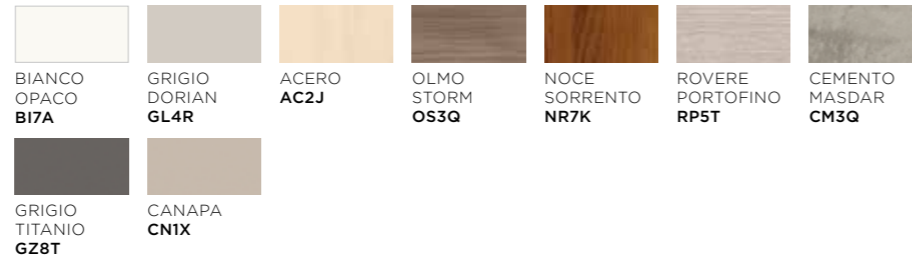
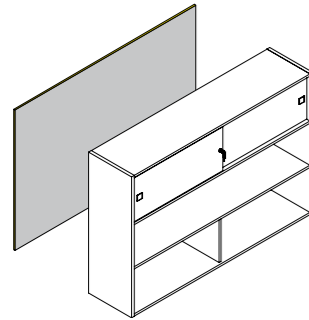
Cassa

Carcase / Estructura / Structure



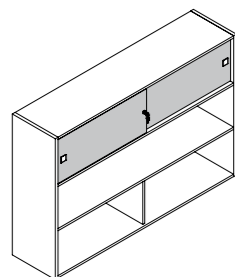
Schiena

Back panel / Parte posterior / Panneau arrière



Facciata

Front / Frente / Façade



È un ambiente sobrio e ben ordinato dove la semplicità diventa sinonimo di funzionalità.
Il legno caratterizza un design semplice ma creativo.
Teko è pensato per uno spazio dinamico e versatile.

It is a sober and well organised environment where simplicity becomes synonymous with functionality.
The wood characterises the simple yet creative design.
Teko is perfect for a dynamic, versatile area.

Es un ambiente sobrio y bien organizado donde la sencillez se convierte en sinónimo de funcionalidad.
La madera define un diseño simple pero a la vez creativo.
Teko ha sido ideado para un espacio dinámico y versátil.

C'est une ambiance sobre et bien ordonnée où la simplicité devient synonyme de fonctionnalité.
Le bois rehausse un design simple, mais créatif.
Teko a été conçu pour créer une pièce dynamique et polyvalente.

TEKO











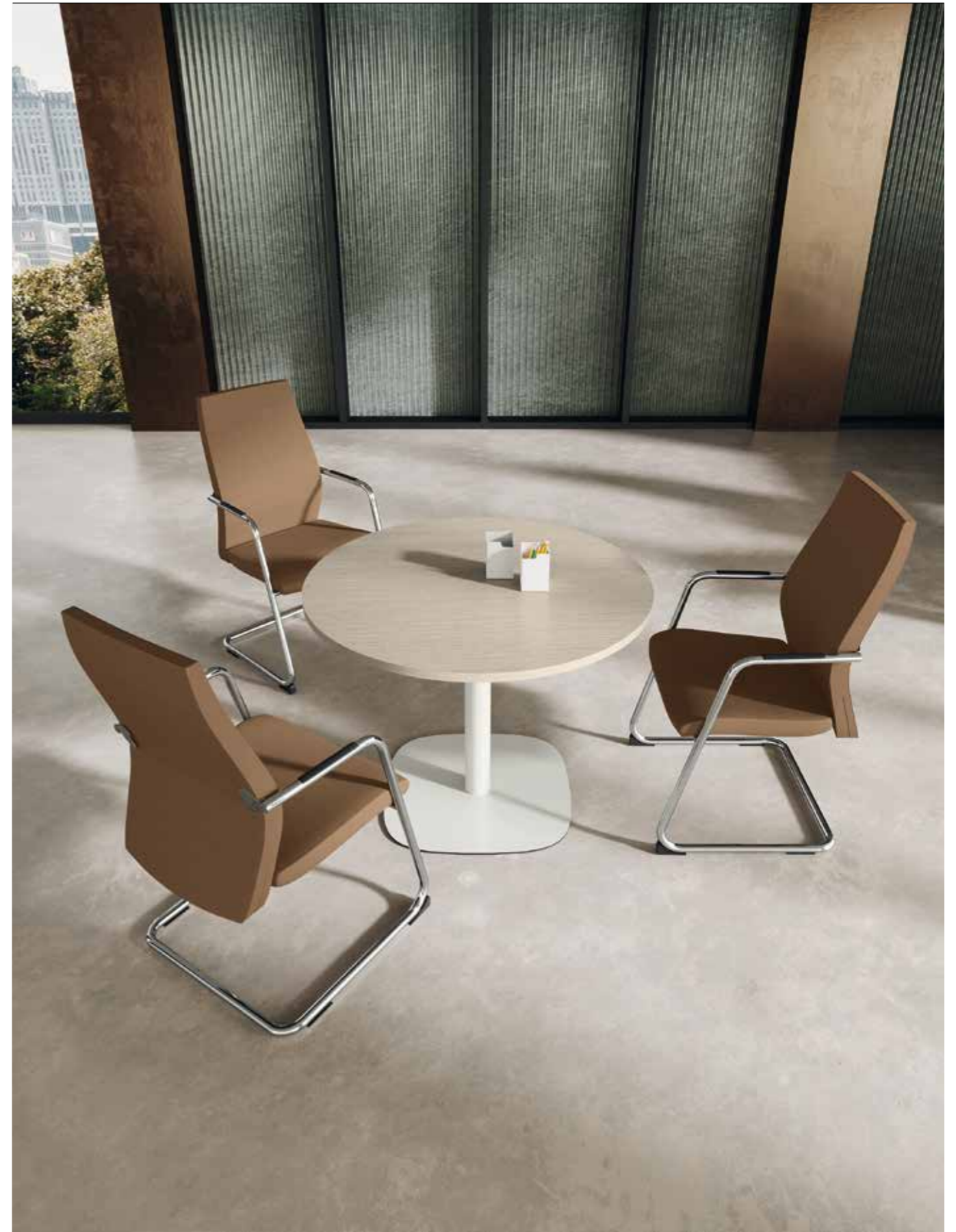




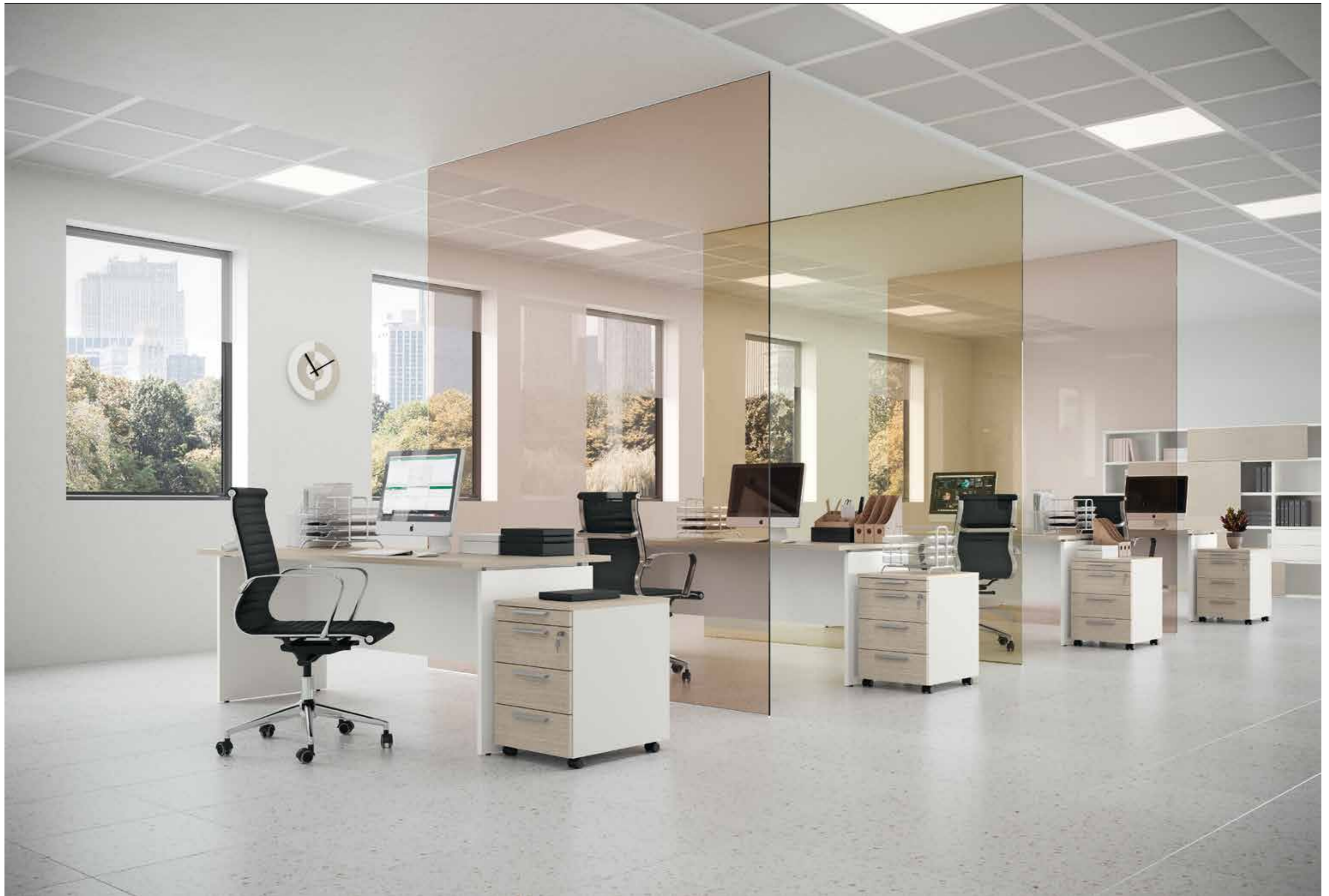




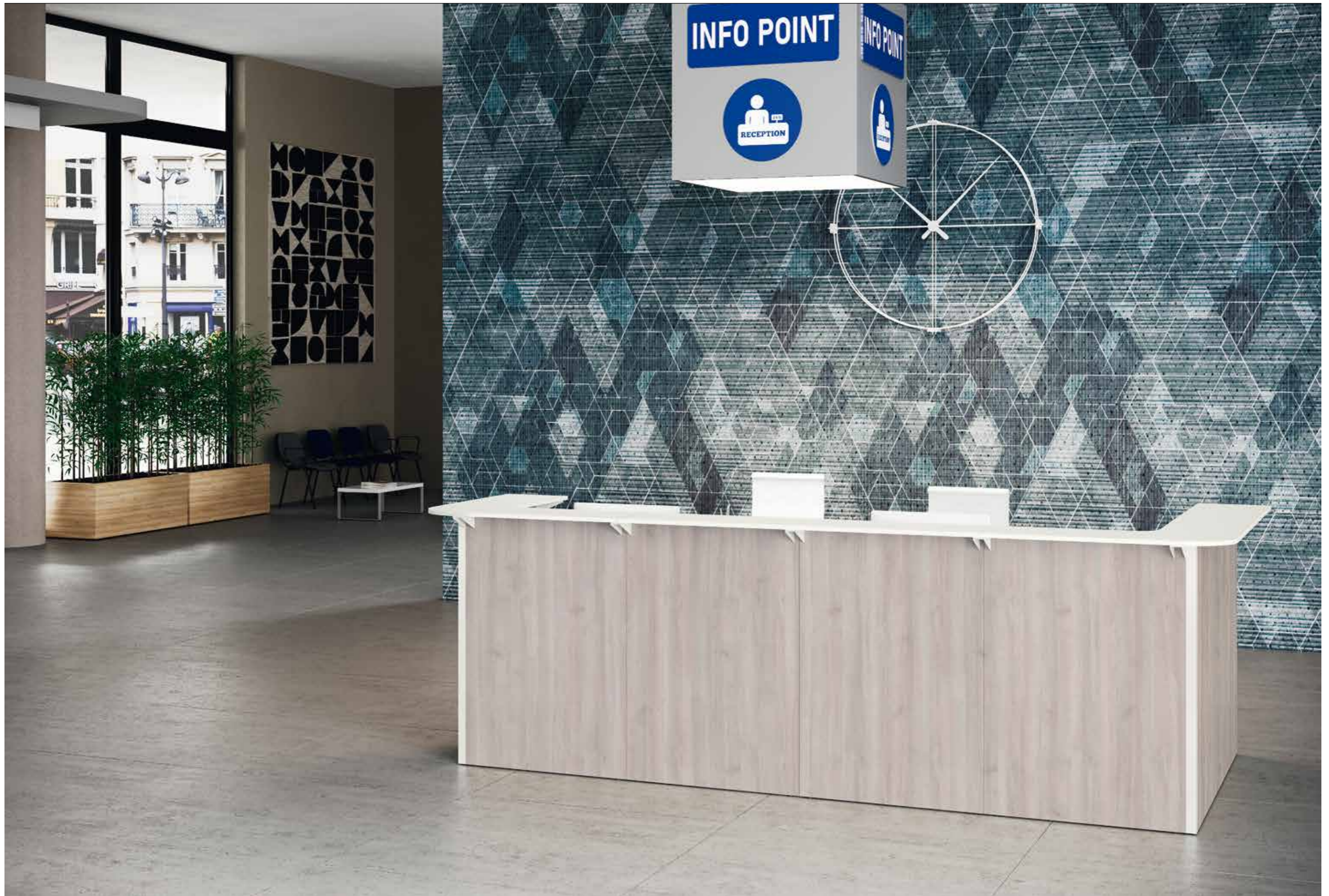
















Informazioni tecniche

Technical informations /
 Datos técnicos /
 Renseignements techniques

TEKO

PANEL struttura in melaminico

PANEL melamine structure / PANEL estructura de melamina / PANEL structure en mélaminé



Scrivanie lineari /
 Linear desks /
 Escritorios lineales /
 Bureaux linéaires

L	P	H	L	P	H
80	80	75	80	60	75
100			100		
120			120		
140			140		
160			160		
180			180		
200	200				

Scrivanie sagomate /
 Profiled desks /
 Escritorios perfilados /
 Bureaux profilés

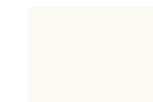
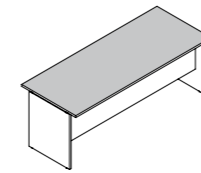
L	P	H
160	80/100	75
180		
200		

Workstation /
 Workstation /
 Workstation /
 Workstation

L	P	H
160	160	75
160	120	
180	120	

Piani in melaminico

Melamine tops / Tableros en melamínico / Plans en mélamine



BIANCO OPACO
B17A



GRIGIO DORIAN
GL4R



ACERO
AC2J



OLMO STORM
OS3Q



NOCE
SORRENTO
NR7K



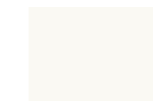
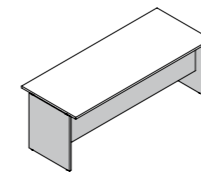
ROVERE
PORTOFINO
RP5T



CILIEGIO
BIANCO
CB6K

Struttura

Structure / Estructura / Structure



BIANCO OPACO
B17A



GRIGIO DORIAN
GL4R



ACERO
AC2J



OLMO STORM
OS3Q



NOCE
SORRENTO
NR7K



ROVERE
PORTOFINO
RP5T



CILIEGIO
BIANCO
CB6K

SMART struttura fissa in metallo

SMART fixed metal structure / SMART estructura fija de metal / SMART structure fixe en métal



Scrivanie lineari /
Linear desks /
Escritorios lineales /
Bureaux linéaires

L	P	H	L	P	H
80	80	75	80	60	75
100			100		
120			120		
140			140		
160			160		
180			180		
200			200		

Scrivanie sagomate /
Profiled desks /
Escritorios perfilados /
Bureaux profilés

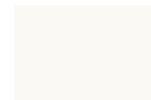
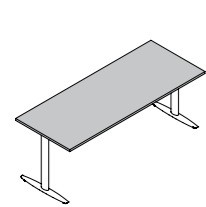
L	P	H
160	80/100	75
180		
200		

Workstation /
Workstation /
Workstation /
Workstation

L	P	H
160	160	75
160	120	
180	120	

Piani in melaminico

Melamine tops / Tableros en melamínico / Plans en mélamine



BIANCO OPACO
B17A



GRIGIO DORIAN
GL4R



ACERO
AC2J



OLMO STORM
OS3Q



NOCE SORRENTO
NR7K



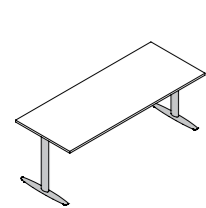
ROVERE PORTOFINO
RP5T



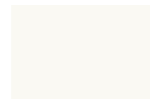
CILIEGIO BIANCO
CB6K

Struttura

Structure / Estructura / Structure



ALLUMINIO
AL1A
(RAL 9006)



BIANCO OPACO
B17A
(RAL 9003)

CLASSIC struttura fissa canalizzata in metallo

CLASSIC fixed channeled metal structure / CLASSIC estructura fija canalizada en metal / CLASSIC structure fixe canalisée en métal



Scrivanie lineari /
Linear desks /
Escritorios lineales /
Bureaux linéaires

L	P	H	L	P	H
80	80	75	80	60	75
100			100		
120			120		
140			140		
160			160		
180			180		
200			200		

Scrivanie sagomate /
Profiled desks /
Escritorios perfilados /
Bureaux profilés

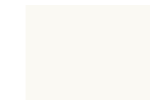
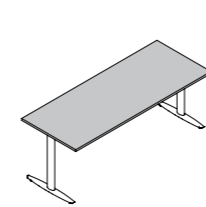
L	P	H
160	80/100	75
180		
200		

Workstation /
Workstation /
Workstation /
Workstation

L	P	H
160	160	75
160	120	
180	120	

Piani in melaminico

Melamine tops / Tableros en melamínico / Plans en mélamine



BIANCO OPACO
B17A



GRIGIO DORIAN
GL4R



ACERO
AC2J



OLMO STORM
OS3Q



NOCE SORRENTO
NR7K



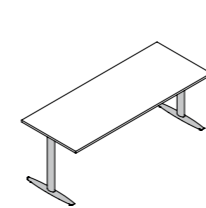
ROVERE PORTOFINO
RP5T



CILIEGIO BIANCO
CB6K

Struttura

Structure / Estructura / Structure



ALLUMINIO
AL1A
(RAL 9006)



BIANCO OPACO
B17A
(RAL 9003)

Raccordi 90° e terminali

90° joints and terminals / Empalmes 90° y terminales / Raccords 90° et terminaisons



Raccordi sagomati a 90° /
90° profiled joints /
Empalmes perfilados a 90° /
Raccords profilés à 90°

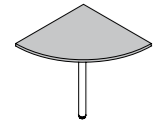
L	P	H
60	60	75
80	80	
80	60	

Terminali sagomati /
Profiled terminals /
Terminales perfilados /
Terminaisons profilées

L	P	H
60	30	75
80	40	
125,5	40	
165,5	50	

Piani in melaminico

Melamine tops / Tableros en melamínico / Plans en mélamine



BIANCO OPACO
B17A



GRIGIO DORIAN
GL4R



ACERO
AC2J



OLMO STORM
OS3Q



NOCE
SORRENTO
NR7K



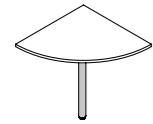
ROVERE
PORTOFINO
RP5T



CILIEGIO
BIANCO
CB6K

Sostegno tubolare in metallo

Tubular metal support / Soporte tubular en metal / Tube en métal



ALLUMINIO
AL1A
(RAL 9006)



BIANCO OPACO
B17A
(RAL 9003)

Modesty panel (lineari e sagomati)

Modesty panel (linear and profiled) / Modesty panel (lineales y perfilados) / Panneau modesty (linéaires et profilés)

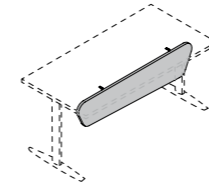


Modesty panel /
Modesty panel /
Modesty panel /
Modesty panel

L	Sp	H
140	1,8 / 2,5	29,7 / 32,2
160		
180		
200		

Modesty panel in melaminico

Melamine modesty panel / Modesty panel en melamínico / Panneau modesty de mélamine



BIANCO OPACO
B17A



GRIGIO DORIAN
GL4R



ACERO
AC2J



OLMO STORM
OS3Q



NOCE
SORRENTO
NR7K



ROVERE
PORTOFINO
RP5T



CILIEGIO
BIANCO
CB6K



BLU OPALE
BO7H



CADAQUES
CQ3Q



AGAVE
GV7A

Schermi divisori frontali e laterali (lineari e sagomati)

Front and side divider screens (linear and profiled) / Pantallas divisorias frontales y laterales (lineales y perfiladas) / Écrans de séparation frontaux et latéraux (linéaires et profilés)



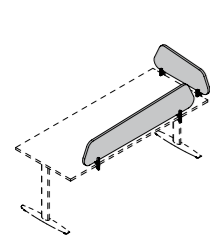
Schermi frontali e laterali /
Front and side screens /
Pantallas frontales y laterales /
Panneaux frontaux et latéraux

L	Sp	H
60 (*)		
80		
100		
120	1,8 / 2,5	29,7 / 32,2
140		
160		
180		
200 (*)		

(*)Schermi sagomati non disponibili /
Profiled screens not available /
Pantallas perfiladas no disponibles /
Panneaux profilés non disponibles

Schermi divisori frontali e laterali in melaminico

Melamine front and side divider screens / Pantallas divisorias frontales y laterales en melaminico / Écrans de séparation frontaux et latéraux en mélamine



BIANCO OPACO
BI7A



GRIGIO DORIAN
GL4R



ACERO
AC2J



OLMO STORM
OS3Q



NOCE SORRENTO
NR7K



ROVERE PORTOFINO
RP5T



CILIEGIO BIANCO
CB6K



BLU OPALE
BO7H



CADAQUES
CQ3Q



AGAVE
GV7A

Schermi divisori frontali e laterali

Front and side divider screens / Pantallas divisorias frontales y laterales / Écrans de séparation frontaux et latéraux

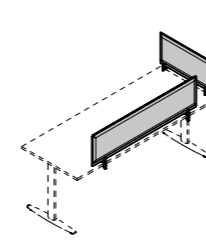


Schermi frontali e laterali /
Front and side screens /
Pantallas frontales y laterales /
Panneaux frontaux et latéraux

L	Sp	H
80	3	39
120		
160		

Schermo divisorio fonoassorbente frontale e laterale in tessuto

Soundproof front and side fabric divider screen / Pantalla divisoria fonoabsorbente frontal y lateral en tejido / Écran de séparation frontal et latéral en tissu insonorisant



CANAPA 532
F02B



GRIGIO 629
F01A



AZZURRO 377
F06F



ANTRACITE 607
F07G

Paretine divisorie e reception

Partition walls and reception / Paredes de partición y recepción / Cloisons et réception

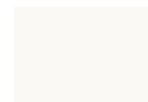
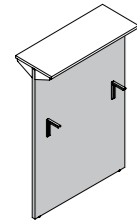


Paretine /
Partition walls /
Paredes /
Cloisons

L	Sp	H
50	2,5	115,7 / 147,7
60		
70		
80		

Paretina divisoria in melaminico

Melamine partition walls / Pared de partición en melamínico / Cloison en mélamine



BIANCO OPACO
B17A



GRIGIO DORIAN
GL4R



ACERO
AC2J



OLMO STORM
OS3Q



NOCE
SORRENTO
NR7K



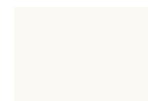
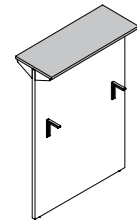
ROVERE
PORTOFINO
RP5T



CILIEGIO
BIANCO
CB6K

Mensola in melaminico

Melamine shelf / Estante en melamínico / Étagère en mélamine



BIANCO OPACO
B17A



GRIGIO DORIAN
GL4R



ACERO
AC2J



OLMO STORM
OS3Q



NOCE
SORRENTO
NR7K



ROVERE
PORTOFINO
RP5T



CILIEGIO
BIANCO
CB6K

Angoli per paretine divisorie

Corner for partition walls / Ángulos para paredes divisorias / Angles pour cloisons



BIANCO OPACO
B17A



GRIGIO DORIAN
GL4R

Call center

Call center / Call center / Centre d'appels



Call center singolo /
Single call center /
Call center individual /
Centre d'appel simple

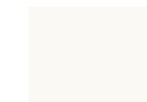
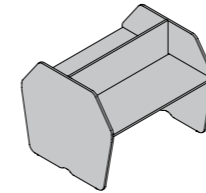
L	P	H
82,5	62,5	115,7 / 135,7
102,5		
122,5		
142,5		

Call center doppio /
Double call center /
Call center doble /
Centre d'appel double

L	P	H
82,5	127,5	115,7 / 135,7
102,5		
122,5		
142,5		

Piani, fianchi e pannelli frontali in melaminico

Melamine tops, sides and front panels / Encimeras, laterales y paneles frontales en melamínico / Plans, côtés et panneaux frontaux en mélamine



BIANCO OPACO
B17A



GRIGIO DORIAN
GL4R



ACERO
AC2J



OLMO STORM
OS3Q



NOCE
SORRENTO
NR7K



ROVERE
PORTOFINO
RP5T



CILIEGIO
BIANCO
CB6K

Cassettiere base

Bases with drawers / Bases con cajones / Bases avec tiroirs

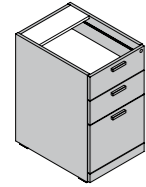


Cassettiere /
Drawer units /
Cajoneras /
Caissons à tiroirs

L	P	H
41,8	56,4 / 79,6	75

Cassa e frontali

Carcase and front panels / Estructura y frentes / Caisson et façades



BIANCO OPACO
B17A



GRIGIO DORIAN
GL4R



ACERO
AC2J



OLMO STORM
OS3Q



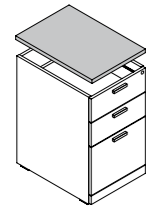
NOCE
SORRENTO
NR7K



ROVERE
PORTOFINO
RP5T

Top di finitura

Finishing top / Encimera de acabado / Top de finition



BIANCO OPACO
B17A



GRIGIO DORIAN
GL4R



ACERO
AC2J



OLMO STORM
OS3Q



NOCE
SORRENTO
NR7K



ROVERE
PORTOFINO
RP5T



CILIEGIO
BIANCO
CB6K

Mobili di servizio

Service units / Muebles de servicio / Meubles de service



Con ruote /
With wheels /
Con ruedas /
Avec roulettes

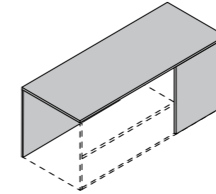
L	P	H
90	59,7	63,5

Con piedi /
With feet /
Con pies /
Avec pieds

L	P	H
90	59,7	62,5
135		
180		

Struttura

Structure / Estructura / Structure



BIANCO OPACO
B17A



GRIGIO DORIAN
GL4R



ACERO
AC2J



OLMO STORM
OS3Q



NOCE
SORRENTO
NR7K



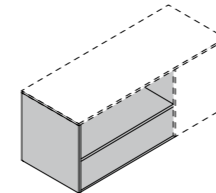
ROVERE
PORTOFINO
RP5T



CILIEGIO
BIANCO
CB6K

Cassa

Carcase / Estructura / Caisson



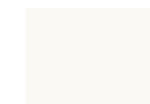
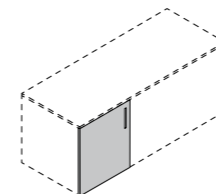
BIANCO OPACO
B17A



GRIGIO DORIAN
GL4R

Facciate

Fronts / Fachadas / Façades



BIANCO OPACO
B17A



GRIGIO DORIAN
GL4R



ACERO
AC2J



OLMO STORM
OS3Q



NOCE
SORRENTO
NR7K



ROVERE
PORTOFINO
RP5T



CILIEGIO
BIANCO
CB6K

Tavoli riunione - Struttura in melaminico

Meeting tables - Structure in melamine / Mesas de reunión - Estructura de melamina / Tables de reunion - Structure en mélaminé



Tavolo Ovale /
Oval table /
Mesa oval /
Table ovale

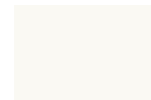
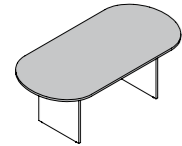
L	P	H
200	100	75

Tavolo Rettangolare /
Rectangular table /
Mesa rectangular /
Table rectangulaire

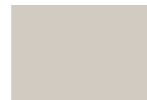
L	P	H
200	100	75

Piani in melaminico

Melamine tops / Encimeras en melamínico / Plans en mélamine



BIANCO OPACO
B17A



GRIGIO DORIAN
GL4R



ACERO
AC2J



OLMO STORM
OS3Q



NOCE
SORRENTO
NR7K



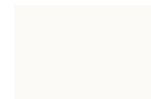
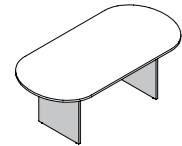
ROVERE
PORTOFINO
RP5T



CILIEGIO
BIANCO
CB6K

Struttura in melaminico

Melamine structure / Estructura en melamínico / Structure en mélamine



BIANCO OPACO
B17A



GRIGIO DORIAN
GL4R



ACERO
AC2J



OLMO STORM
OS3Q



NOCE
SORRENTO
NR7K



ROVERE
PORTOFINO
RP5T



CILIEGIO
BIANCO
CB6K

Tavoli riunione - Basamento in metallo

Meeting tables - Metal base / Mesas de reunión - Bloque de metal / Tables de reunion - Pied en métal



Tavolo Ovale /
Oval table /
Mesa oval /
Table ovale

L	P	H
200	100	75

Tavolo Rettangolare /
Rectangular table /
Mesa rectangular /
Table rectangulaire

L	P	H
200	100	75

Tavolo Composto /
Square table /
Mesa compuesta /
Table carrée

L	P	H
100	100	75

Tavolo Tondo /
Round table /
Mesa redonda /
Table ronde

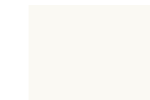
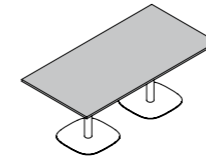
L	P	H
100	100	75
120	120	

Tavolo Stand-up /
Stand-up table /
Mesa Stand-up /
Table Stand-up (haute)

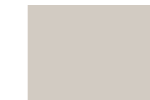
L	P	H
60	60	110
80	80	

Piani in melaminico

Melamine tops / Encimeras en melamínico / Plans en mélamine



BIANCO OPACO
B17A



GRIGIO DORIAN
GL4R



ACERO
AC2J



OLMO STORM
OS3Q



NOCE
SORRENTO
NR7K



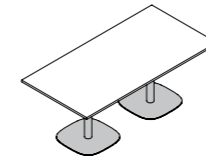
ROVERE
PORTOFINO
RP5T



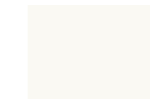
CILIEGIO
BIANCO
CB6K

Struttura in melaminico

Melamine structure / Estructura en melamínico / Structure en mélamine



ALLUMINIO
AL1A
(RAL 9006)



BIANCO OPACO
B17A
(RAL 9003)

eT è la nuova scrivania sit-stand: un arredo in grado di migliorare sensibilmente il benessere in ufficio. Avere una postazione di lavoro regolabile in altezza è infatti la soluzione ideale per ottimizzare ergonomia e confort e, di conseguenza, per incrementare la produttività.

eT is the new sit-stand desk: a furnishing system capable of significantly improving office well-being. Having a height-adjustable work area is the ideal solution for optimising ergonomics and comfort and thus, increasing productivity.

eT es el nuevo escritorio sit-stand: un amoblado capaz de mejorar sensiblemente el bienestar en la oficina. Tener un puesto de trabajo regulable en altura es de hecho la solución ideal para optimizar ergonomía y confort y, en consecuencia, para incrementar la productividad.

eT est le nouveau bureau assis-debout : un ameublement en mesure d'améliorer sensiblement le bien-être au bureau. Avoir un poste de travail réglable en hauteur est en effet la solution idéale pour optimiser l'ergonomie et le confort et par conséquent, pour incrémenter la productivité.

eT

Le nostre cattive abitudini...

Our bad habits... / Nuestros malos hábitos... / Nos mauvaises habitudes...

70%

delle persone conduce una vita sedentaria / of people live a sedentary life / de las personas lleva una vida sedentaria / des personnes mènent une vie sédentaire.



80%

di una giornata viene trascorso stando seduti / of a day is spent sitting down / de un día se transcurre sentados / de la journée est passée en restant assis.



90%

del tempo seduti la nostra postura non è corretta / of the time our posture is incorrect / del tiempo sentados nuestra postura no es correcta / du temps assis notre posture n'est pas correcte.



75%

dei lavoratori sedentari può sviluppare patologie / of office workers develop ailments / de los trabajadores sedentarios puede desarrollar patologías / des travailleurs sédentaires peuvent développer des pathologies.



Il 70% di noi conduce una vita sedentaria e questo significa che trascorre quasi l'80% della propria giornata seduto.

Il 90% di questo tempo inoltre lo passiamo in una postura non corretta e questo fa sì che il 75% di coloro che fanno un lavoro d'ufficio negli anni sviluppa gravi patologie legate alla sedentarietà.

Recenti ricerche hanno dimostrato che fare attività fisica non basta ad annullare gli effetti di tante ore seduti, ma a partire da piccoli gesti di ogni giorno possiamo migliorare la qualità della nostra vita.

Il segreto è imparare a trascorrere meno tempo seduti.

L'ambiente di lavoro si rivela fondamentale per stimolare fisico e mente al meglio: è così che un'area funzionale si trasforma in uno spazio vitale dove assicurarsi benessere, efficienza e creatività.

70% of us lead a sedentary life which means we spend almost 80% of our day sitting down.

90% of this time is also spent sitting with poor posture which means that 75% of people who work in an office develop serious ailments over the years linked to their sedentary lifestyle.

Recent research has demonstrated that taking physical exercise is not enough to counteract the effects of so many hours spent sitting down. We can, however, improve the quality of our lives by introducing a few small changes every day. The secret is learning to spend less time sitting down.

The work environment, therefore, plays an important role in stimulating the mind and body. Thus, a functional area is transformed into a viable space dedicated to well-being, efficiency and creativity.

El 70% de nosotros lleva una vida sedentaria y esto significa que se transcurre el 80% de la jornada sentado.

El 90% de este tiempo además lo pasamos en una postura no correcta y esto hace que el 75% de los que hacen un trabajo de oficina con el paso de los años desarrollen patologías graves asociadas al sedentarismo.

Estudios recientes han demostrado que hacer actividad física no basta para anular los efectos de tantas horas sentados, pero a partir de pequeños gestos cada día podemos mejorar la calidad de nuestra vida.

El secreto es aprender a transcurrir menos tiempo sentados.

El ambiente de trabajo se revela fundamental para estimular mejor físico y mente: es así que un área funcional se transforma en un espacio vital donde asegurarse bienestar, eficiencia y creatividad.

70% d'entre nous mènent une vie sédentaire ce qui signifie que presque 80% de leur journée est passée en position assise.

90% de ce temps est en outre passé dans une position non correcte ce qui fait que 75% de ceux qui font un travail de bureau développent, au fil des années, de graves pathologies liées à la sédentarité.

Des recherches récentes ont montré que faire du sport ne suffit pas à annuler les effets de tant d'heures passées assis, mais nous pouvons améliorer la qualité de notre vie à partir de petits gestes quotidiens.

Le secret est d'apprendre à passer moins de temps assis.

Le milieu de travail s'avère fondamental pour stimuler au mieux le corps et l'esprit : c'est ainsi qu'une zone fonctionnelle se transforme en un espace vital où développer bien-être, efficacité et créativité.

possono essere migliorate!

can be improved! / pueden ser mejoradas! / peuvent être améliorées!



Una postazione di lavoro regolabile in altezza è la soluzione ideale per migliorare ergonomia e confort e di conseguenza per incrementare la produttività. Disporre di una scrivania sit-stand consente non solo di alternare momenti in piedi e seduti, ma anche di fare esercizio fisico ed aumentare il benessere mentre si è in ufficio.

A height-adjustable work area is the ideal solution for improving ergonomics and comfort and thus, increasing productivity. Having a sit-stand desk means not just alternating the time you spend standing and sitting, but also doing some physical exercise and increasing your sense of well-being whilst you are in the office.

Un puesto de trabajo regulable en altura es la solución ideal para mejorar ergonomía y confort y en consecuencia para incrementar la productividad. Disponer de un escritorio sit-stand permite no solo alternar momentos de pie y sentados, sino también hacer ejercicio físico y aumentar el bienestar mientras se está en la oficina.

Un poste de travail réglable en hauteur est la solution idéale pour améliorer l'ergonomie et le confort et par conséquent pour augmenter la productivité. Disposer d'un bureau assis-debout permet non seulement d'alterner des moments debout et assis, mais aussi de faire de l'exercice physique et d'augmenter le bien-être lorsqu'on est au bureau.

Perché scegliere eT

Reasons for choosing eT / Por qué escoger eT / Pourquoi choisir eT.



La scrivania regolabile (da cm 61 a cm 126) consente di avere l'altezza ottimale del piano quando si sceglie di lavorare seduti, ma allo stesso tempo di alternare l'attività stando in piedi. Questa possibilità riattiva la circolazione ed apporta energia all'organismo alleviando tensione e stress e stimolando l'attività mentale.

The adjustable desk (from 61 cm to 126 cm) means you can have the perfect desk top height when you decide to work sitting down, but you can also alternate and work standing up. This option reactivates your circulation and gives your body a boost of energy, relieving tension and stress while stimulating your mind.

El escritorio regulable (de cm 61 a cm 126) permite obtener la altura óptima de la encimera cuando se escoge trabajar sentados, pero al mismo tiempo alternar la actividad estando de pie. Esta posibilidad reactiva la circulación y aporta energía al organismo aliviando tensión y estrés y estimulando la actividad mental.

Le bureau réglable (de cm 61 à cm 126) permet d'avoir la hauteur optimale du plateau lorsqu'on choisit de travailler assis, mais en même temps d'alterner l'activité en restant debout. Cette possibilité réactive la circulation et apporte de l'énergie à l'organisme en soulageant la tension et le stress et en stimulant l'activité mentale.

I plus di eT

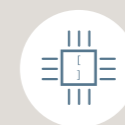
The benefits of eT / Los plus de eT / Les avantages de eT.



61 cm / 126 cm
Altezza minima/massima.
Minimum/maximum height.
Altura mínima/máxima.
Hauteur minimale/maximale.



Colonne di sollevamento a 3 stadi con cuscinetti di scorrimento integrati e spazio ridotto tra i profili.
3-step lifting column with integrated sliding bearings and reduced space between profiles.
Columnas de elevación a 3 estados con cojinetes de deslizamiento integrados y espacio reducido entre los perfiles.
Colonnes de levage à 3 étages avec coussinets de glissement intégrés et espace réduit entre les profils.



Passo a regolazione continua.
Continuously adjustable pitch.
Paso a regulación continua.
Pas à réglage progressif.



Pannello di controllo con bluetooth integrato.
Control panel with integrated Bluetooth.
Panel de control con Bluetooth integrado.
Tableau de contrôle avec bluetooth intégré.



Controllo delle funzioni tramite App.
App-controlled functions.
Control de las funciones a través de App.
Contrôle des fonctions par App.



Peso massimo elevabile: 120 kg.
Maximum lifting weight: 120 kg.
Peso máximo elevable: 120 kg.
Poids maximal soulevable : 120 kg.



Antishock sia in salita che in discesa.
Anti-shock in both up and down operation.
Antichoc tanto in subida como en bajada.
Antichoc aussi bien en montée qu'en descente.



Meccanismo premontato e motori integrati nei sostegni.
Pre-assembled mechanism and integrated motor in the supports.
Mecanismo premontado y motores integrados en los soportes.
Mécanisme prémonté et moteurs intégrés dans les supports.



Velocità di salita/discesa 38 mm/s con soft start/stop.
Up/down speed 38 mm/s with soft start/stop mechanism.
Velocidad de subida/bajada 38 mm/s con arranque/parada suave.
Vitesse de montée/descente 38 mm/s avec démarrage/arrêt progressif.



Rumorosità massima 55dB.
Maximum noise level 55dB.
Ruido máximo 55dB.
Bruit maximal 55dB.



Consumi ridotti a soli 0.1 W in modalità standby.
Power consumption reduced to just 0.1W in standby.
Consumos reducidos solo 0.1 W en modalidad standby.
Consommations réduites à seulement 0.1 W en mode veille.



Struttura PVC free.
PVC-free structure.
Estructura PVC free.
Structure sans PVC.



1 Sostegni motorizzati con cuscinetti di scorrimento a scomparsa

2 Struttura trasversale con doppia trave metallica

3 Alloggiamento centralina

4 Pannello di controllo

1 Motorised supports with concealed sliding bearings

2 Double metal cross beam

3 Central slot

4 Control panel

1 Soportes motorizados con cojinetes de deslizamiento ocultos

2 Estructura transversal con doble travesaño metálico

3 Alojamiento centralita

4 Panel de control

1 Supports motorisés avec coussinets de glissement escamotables

2 Structure transversale avec double poutre métallique

3 Logement centrale

4 Tableau de commande



Il pannello di controllo con Bluetooth integrato gestisce tutte le funzioni e consente la regolazione in altezza della scrivania. Intuitivo ed ergonomico, permette di memorizzare 2 posizioni e rende più immediata la regolazione. Ha anche una funzione memo integrata, da attivare a piacere, che suggerisce il momento migliore per un cambio di posizione.

The control panel with integrated Bluetooth manages all the functions and allows the height of the desk to be adjusted. It is intuitive and ergonomic, storing two positions for instant adjustment. It has an integrated memo function, for use whenever you like, which prompts you when it is time to change position.

El panel de control con Bluetooth integrado gestiona todas las funciones y permite la regulación en altura del escritorio. Intuitivo y ergonómico, permite memorizar 2 posiciones y vuelve más inmediata la regulación. Tiene también una función memo integrada, a activar al gusto, que sugiere el mejor momento para un cambio de posición.

Le tableau de contrôle avec Bluetooth intégré gère toutes les fonctions et permet le réglage en hauteur du bureau. Intuitif et ergonomique, il permet de mémoriser 2 positions et rend le réglage plus immédiat. Il a aussi une fonction mémo intégrée, à activer à discrétion, qui suggère le meilleur moment pour un changement de position.

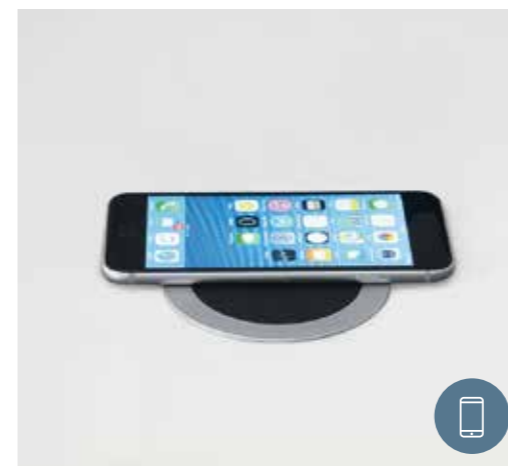


I sostegni motorizzati della scrivania eT dispongono di un sistema antishock integrato: il meccanismo è controllato da un sensore con tempi di reazione molto rapidi che rileva l'ostacolo, arresta immediatamente il movimento della scrivania e retrocede il piano in direzione opposta di circa 4 cm. Una sicurezza in più per ridurre al minimo il rischio di danni a persone e cose.

The motorised supports for the eT desk have an integrated anti-shock system. The mechanism is controlled by a sensor with ultra-rapid reaction times. When it identifies an obstacle, it immediately halts the desk movement and moves the desktop by 4 cm in the opposite direction. Extra safety to minimise the risk of damage to people and property.

Los soportes motorizados del escritorio eT disponen de un sistema antichoque integrado: el mecanismo es controlado por un sensor con tiempos de reacción muy rápidos que detecta el obstáculo, detiene inmediatamente el movimiento del escritorio y retrocede la encimera en dirección opuesta de aproximadamente 4 cm. Una seguridad más para reducir al mínimo el riesgo de daños a personas y cosas.

Les supports motorisés du bureau eT disposent d'un système antichoc intégré : le mécanisme est contrôlé par un capteur avec un temps de réaction très rapide qui relève l'obstacle, arrête immédiatement le mouvement du bureau et fait reculer le plateau dans la direction opposée d'environ 4 cm. Une sécurité en plus pour réduire au minimum le risque de dommages aux personnes et aux choses.



Per il piano, è disponibile l'accessorio per la ricarica wireless. Il dispositivo è iscritto al consorzio Qi e certificato CE e Rohs che assicura totale compatibilità con i principali smartphone.

Optional accessory for wireless recharging is available for the desktop. The device, registered with the Qi consortium, and CE and Rohs certified, is fully compatible with major brand smartphones.

Para la encimera, está disponible el accesorio para la recarga wireless. El dispositivo está inscrito en el consorcio Qi y certificado CE y Rohs que asegura total compatibilidad con los principales smartphone.

Le plateau dispose de l'accessoire pour la recharge sans fil. Le dispositif est inscrit au consortium Qi et certifié CE et Rohs, ce qui garantit une compatibilité totale avec les principaux smartphones.



La doppia presa USB è un altro accessorio utile per rendere ancora più funzionale la scrivania.

The dual USB socket is another useful accessory which makes the desk even more functional.

La doble toma USB es otro accesorio útil para volver aun más funcional el escritorio.

La double prise USB est un autre accessoire utile pour rendre le bureau encore plus fonctionnel.



La App consente il controllo di eT da smartphone, tablet o PC. Oltre alle normali funzioni di regolazione della scrivania, permette di visualizzare l'altezza del piano e altre funzioni aggiuntive. Attraverso il bluetooth consente inoltre l'accesso alla diagnostica e al supporto tecnico.

The App allows you to control the eT from your smartphone, tablet or PC. In addition to the normal desk adjustment functions, it also allows you to view the height of the desktop and offers extra functions, such as access to diagnostics and technical support. Bluetooth also gives you access to diagnostics and technical support.

La App permite el control de eT desde smartphone, tablet o PC.

Además de las funciones normales de regulación del escritorio, permite visualizar la altura de la encimera y otras funciones adicionales.

A través del bluetooth permite además el acceso al diagnóstico y al soporte técnico.

L'App permet le contrôle de eT depuis un smartphone, une tablette ou un ordinateur.

Elle ne se contente pas de gérer les fonctions de réglage du bureau, mais permet également d'afficher la hauteur du plateau et d'accéder à d'autres fonctions supplémentaires. Grâce au bluetooth elle permet d'accéder au diagnostic et à l'assistance technique.

eT - Scrivanie piano in melaminico

eT - Melamine desks tops / eT - Escritorios con tablero de melamina / eT - Bureaux plan en melamine



L	P	H
120	80	61 / 126
140		
160		
180		
200		

Scrivania /
Desk /
Escritorio /
Bureau

Piani in melaminico

Melamine tops / Encimeras de melamina / Plans en mélaminé



BIANCO OPACO
BI7A

GRIGIO DORIAN
GL4R

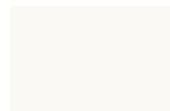
ACERO
AC2J

OLMO STORM
OS3Q

ROVERE
PORTOFINO
RP5T

Sostegni

Supports / Soportes / Supports



BIANCO OPACO
BI7A
(RAL 9003)

eT - Schermi divisori e modesty panel

eT - Divider screens and modesty panel / eT - Pantallas divisorias y panel modesty /
eT - Cloisons de séparation et panneau modesty



L	Sp	H
80	1,8	29,7
100		
120		
140		
160		
180		
200		

Schermo divisorio lineare per scrivania /
Straight partition screen for desk /
Pantalla divisoria lineal para escritorio /
Écran de séparation linéaire pour bureau



L	Sp	H
80	2,5	32,2
100		
120		
140		
160		
180		

Schermo divisorio sagomato per scrivania /
Shaped partition screen for desk /
Pantalla divisoria perfilada para escritorio /
Écran de séparation façonné pour bureau



L	Sp	H
80	3	39
120		
160		

Schermo divisorio fonoassorbente per scrivania /
Sound-absorbent partition screen for desk /
Pantalla divisoria fonoabsorbente para escritorio /
Écran de séparation insonorisant pour bureau



L	Sp	H
120	1,8	29,7
140		
160		
180		
200		

Modesty panel lineare per scrivania /
Straight modesty panel for desk /
Modesty panel lineal para escritorio /
Modesty panel linéaire pour bureau

Schermo divisorio lineare, sagomato e modesty panel lineare

Straight and shaped partition screen and straight modesty panel / Pantalla divisoria lineal, perfilada y modesty panel lineal / Écran de séparation linéaire, façonné et modesty panel linéaire



BIANCO OPACO
BI7A

GRIGIO DORIAN
GL4R

ACERO
AC2J

OLMO STORM
OS3Q

ROVERE
PORTOFINO
RP5T

BLU OPALE
BO7H

CADAQUES
CQ3Q



AGAVE
GV7A

Schermi fonoassorbenti

Soundproof partitions / Pantallas fonoabsorbentes / Panneaux acoustiques absorbants



CANAPA 532
F02B

GRIGIO 629
F01A

AZZURRO 377
F06F

ANTRACITE 607
F07G

La zona accoglienza è probabilmente la più importante dell'intero ambiente lavorativo: trasmette il carattere di uno spazio, coniuga professionalità e cordialità. Per funzionare al meglio esige alta flessibilità e uno stile inconfondibile, una contemporaneità senza termini di tempo.

The hospitality area is probably the most important place in the whole working environment: it puts across the character of an area, combining professionalism and friendliness. To work well, it requires high flexibility and a unique style that in turn result into contemporary and timeless features.

La zona de acogida es probablemente la más importante de todo el ambiente de trabajo: transmite el carácter de un espacio; combina profesionalidad y cordialidad. Para funcionar de manera óptima, requiere una gran flexibilidad y un estilo inconfundible, una contemporaneidad sin términos de tiempo.

La zone d'accueil est probablement la plus importante dans un espace de travail: elle caractérise l'espace, conjugue professionnalisme et cordialité. Pour fonctionner au mieux, elle nécessite flexibilité et style unique, un esprit contemporain sans limite dans le temps.

INTRO















INFORMAZIONI TECNICHE

Technical informations /
 Datos técnicos /
 Renseignements techniques

INTRO

GET IN - Frontale lineare strutturale - Frontale lineare di finitura

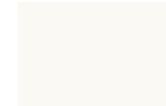
Structural front panel - Finishing front panel / Frente estructural - Frente de acabado /
 Façade structurelle - Façade de finition



L	Sp	H
80	3,6	105,5
100		
120		
140		
160		
180		
200		

Frontale lineare strutturale

Structural front panel / Frente estructural / Façade structurelle



BIANCO OPACO
BI7A



ACERO
AC2J



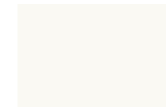
OLMO STORM
OS3Q



ROVERE
 PORTOFINO
RP5T

Frontale lineare di finitura

Finishing front panel / Frente de acabado / Façade de finition



BIANCO OPACO
BI7A



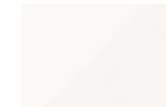
ACERO
AC2J



OLMO STORM
OS3Q



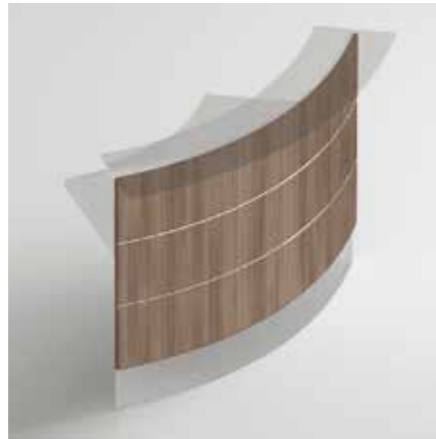
ROVERE
 PORTOFINO
RP5T



BIANCO UV
BU3Q

GET IN - Frontale curvo strutturale - Frontale curvo di finitura

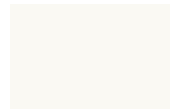
Structural curved front panel - Finishing curved front panel / Frente curvo estructural - Frente curvo de acabado / Façade courbé structurelle - Façade courbé de finition



L	Sp	H
150,6	3,6	105,5
89,5		

Frontale curvo strutturale

Structural front panel / Frente estructural / Façade structurelle



BIANCO OPACO
B17A

Frontale curvo di finitura

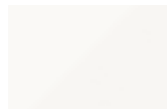
Finishing front panel / Frente de acabado / Façade de finition



OLMO STORM
OS3Q



ROVERE
PORTOFINO
RP5T



BIANCO UV
BU3Q

GET IN - Mensola lineare e curva in melaminico

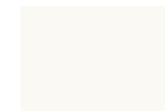
Linear and curved melamine shelf / Repisa lineal y curvo de melamínico / Étagère linéaire et courbé en mélamine



L	P	Sp
80	33,1	1,8
100		
120		
140		
160		
180		
200		



L	P	Sp
164,4	33,1	1,8
109,1		



BIANCO OPACO
B17A



ACERO
AC2J



OLMO STORM
OS3Q



ROVERE
PORTOFINO
RP5T

GET IN - Mensola lineare e curva in vetro

Linear and curved glass shelf / Repisa lineal y curvo de vidrio / Étagère linéaire et courbé en verre



L	P	Sp
80	33,1	1
100		
120		
140		
160		
180		
200		



L	P	Sp
164,4	33,1	1
109,1		



BIANCO LATTE
WH1M



OXFORD
XF3B



LONDRA
LN6U



NERO
NESP

GET IN - Piano scrivania lineare e curvo

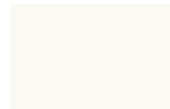
Linear and curved desk top / Tablero escritorio lineal y curvo / Plateau bureau linéaire et courbé



L	P	Sp
80	60	3,5
100		
120		
140		
160		
180		
200		



L	P	Sp
147	60	3,5
84,4		



BIANCO OPACO
B17A



ACERO
AC2J



OLMO STORM
OS3Q



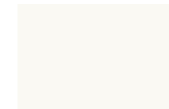
ROVERE
PORTOFINO
RP5T

GET IN - Fianchi finali

End panels / Costados finales / Cotés terminaux



Sp	P	H
3,5	63,7	107,8



BIANCO OPACO
B17A



ACERO
AC2J



OLMO STORM
OS3Q



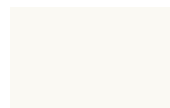
ROVERE
PORTOFINO
RP5T

GET IN - Angolo 90° - Frontali, mensola e piano scrivania

90° corner - Front panels, shelf and desk top / Ángulo 90° - Frentes, repisa y tablero escritorio / Angle 90° - Façades, étagère et plateau bureau



L	P	H
77,1	77,1	107,6



BIANCO OPACO
B17A



ACERO
AC2J



OLMO STORM
OS3Q



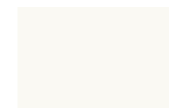
ROVERE
PORTOFINO
RP5T

GET IN - Mobili centrali e finali - Cassa

Central and end units - Carcase / Muebles centrales y finales - Estructura / Meubles centraux et terminaux - Structure



L	P	H
44,9	63,7	107,8
	66	



BIANCO OPACO
B17A



ACERO
AC2J



OLMO STORM
OS3Q



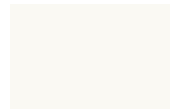
ROVERE
PORTOFINO
RP5T

GET IN - Mobili centrali e finali - Facciata

Central and end units - Front / Muebles centrales y finales - Frente / Meubles centraux et terminaux - Façade



L	Sp	H
44,7	1,8	69
		105



BIANCO OPACO
B17A



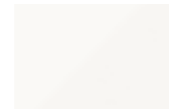
ACERO
AC2J



OLMO STORM
OS3Q



ROVERE
PORTOFINO
RP5T



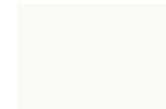
BIANCO UV
BU3Q

GET - Frontale

Front panel / Frente / Façade



L	Sp	H
80	1,8	105,5
100		
120		
140		
160		
180		
200		
L	Sp	H
120	1,8	68,5



BIANCO OPACO
B17A



ACERO
AC2J



OLMO STORM
OS3Q



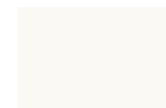
ROVERE
PORTOFINO
RP5T

GET - Mensola in melaminico

Melamine shelf / Repisa de melamínico / Étagère en mélamine



L	P	Sp
80	33,1	1,8
100		
120		
140		
160		
180		
200		



BIANCO OPACO
B17A



ACERO
AC2J



OLMO STORM
OS3Q



ROVERE
PORTOFINO
RP5T

GET - Mensola in vetro

Glass shelf / Repisa de vidrio / Étagère en verre



L	P	Sp
80	33,1	1
100		
120		
140		
160		
180		
200		



BIANCO LATTE
WHIM

OXFORD
XF3B

LONDRA
LN6U

NERO
NESP

GET - Angolo 90° - Frontali, mensola e piano scrivania

90° corner - Front panels, shelf and desk top / Ángulo 90° - Frentes, repisa y tablero escritorio / Angle 90° - Façades, étagère et plateau bureau



L	P	H
77,1	77,1	107,6



BIANCO OPACO
B17A

ACERO
AC2J

OLMO STORM
OS3Q

ROVERE
PORTOFINO
RP5T

GET - Piano scrivania

Desk top / Tablero escritorio / Plateau bureau



L	P	Sp
80	60	3,5
100		
120		
140		
160		
180		
200		
L	P	Sp
120	90	3,5



BIANCO OPACO
B17A

ACERO
AC2J

OLMO STORM
OS3Q

ROVERE
PORTOFINO
RP5T

GET - Fianchi finali

End panels / Costados finales / Cotés terminaux



Sp	P	H
3,5	63,7	107,8
		72,2
	17,9	35,9



BIANCO OPACO
B17A

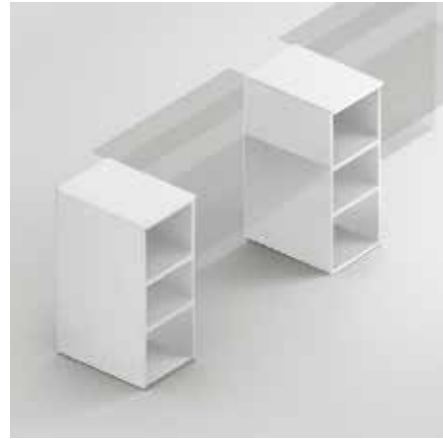
ACERO
AC2J

OLMO STORM
OS3Q

ROVERE
PORTOFINO
RP5T

GET - Mobili centrali e finali - Cassa

Central and end units - Carcase / Muebles centrales y finales - Estructura / Meubles centraux et terminaux - Structure



L	P	H
44,9	63,7	107,8
	66	



BIANCO OPACO
B17A

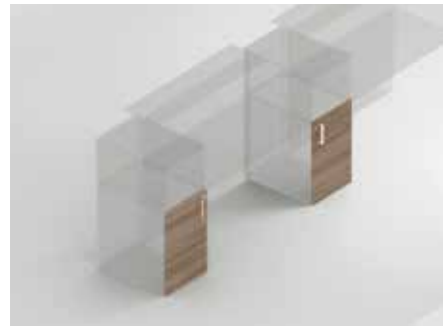
ACERO
AC2J

OLMO STORM
OS3Q

ROVERE
PORTOFINO
RP5T

GET - Mobili centrali e finali - Facciata

Central and end units - Front / Muebles centrales y finales - Frente / Meubles centraux et terminaux - Façade



L	Sp	H
44,7	1,8	69
		105



BIANCO OPACO
B17A

ACERO
AC2J

OLMO STORM
OS3Q

ROVERE
PORTOFINO
RP5T

BIANCO UV
BU3Q

COLOR - Frontale

Front panel / Frente / Façade



L	Sp	H
80	1,8	105,5
100		
120		
140		
160		
180		
200		



BIANCO OPACO
B17A

ACERO
AC2J

OLMO STORM
OS3Q

ROVERE
PORTOFINO
RP5T

COLOR - Mensola a "L"

"L" shelf / Repisa "L" / Étagère "L"



L	P	H
80	26,5	59,7
120		



BIANCO OPACO
B17A

GRIGIO DORIAN
GL4R

ACERO
AC2J

OLMO STORM
OS3Q

NOCE SORRENTO
NR7K

EUCALIPTO
CL1X

ROVERE
PORTOFINO
RP5T

CILIEGIO BIANCO
CB6K

CEMENTO
MASDAR
CM3Q

GRIGIO TITANIO
GZ8T

BLU OPALE
BO7H

CADAQUES
CQ3Q

AGAVE
GV7A

CANAPA
CN1X



BIANCO UV
BU3Q

COLOR - Piano scrivania

Desk top / Tablero escritorio / Plateau bureau



L	P	Sp	L	P	Sp				
80	80	3,5	80	60	3,5				
100			120			140	160	180	200
120			140			160	180	200	
140			160			180	200		
160			180			200			
180			200						
200									



BIANCO OPACO
B17A

ACERO
AC2J

OLMO STORM
OS3Q

ROVERE
PORTOFINO
RP5T

COLOR - Fianchi finali

End panels / Costados finales / Cotés terminaux



Sp	P	H
3,5	61,9	105,6
	81,9	



BIANCO OPACO
B17A

ACERO
AC2J

OLMO STORM
OS3Q

ROVERE
PORTOFINO
RP5T

COLOR - Angolo 90° - Frontali e piano scrivania

90° corner - Front panels and desk top / Ángulo 90° - Frentes y tablero escritorio / Angle 90° - Façades et plateau bureau



L	P	H
61,9	60	105,5
81,9	80	



BIANCO OPACO
B17A

ACERO
AC2J

OLMO STORM
OS3Q

ROVERE
PORTOFINO
RP5T

Una gamma di contenitori ampia e unica sul mercato, perché organizzare al meglio il proprio ufficio è importante ma spesso non semplice: qui flessibilità, componibilità e personalizzazione sono fondamentali. Poter scegliere tra tante soluzioni rende più facile e divertente l'ottimizzazione degli spazi.

A wide range of modular unit unique to the market, because organising your office well is important, but often not simple: here flexibility, modularity and personalisation are essential. Being able to choose from so many solutions makes it easy and fun to optimise your space.

Una gama de módulos contenedores amplia y única en el mercado, porque organizar de manera óptima la oficina es importante pero a menudo no resulta sencillo: para ello, la flexibilidad, la modularidad y la personalización son fundamentales. Poder elegir entre tantas soluciones hace más fácil y divertida la optimización de los espacios.

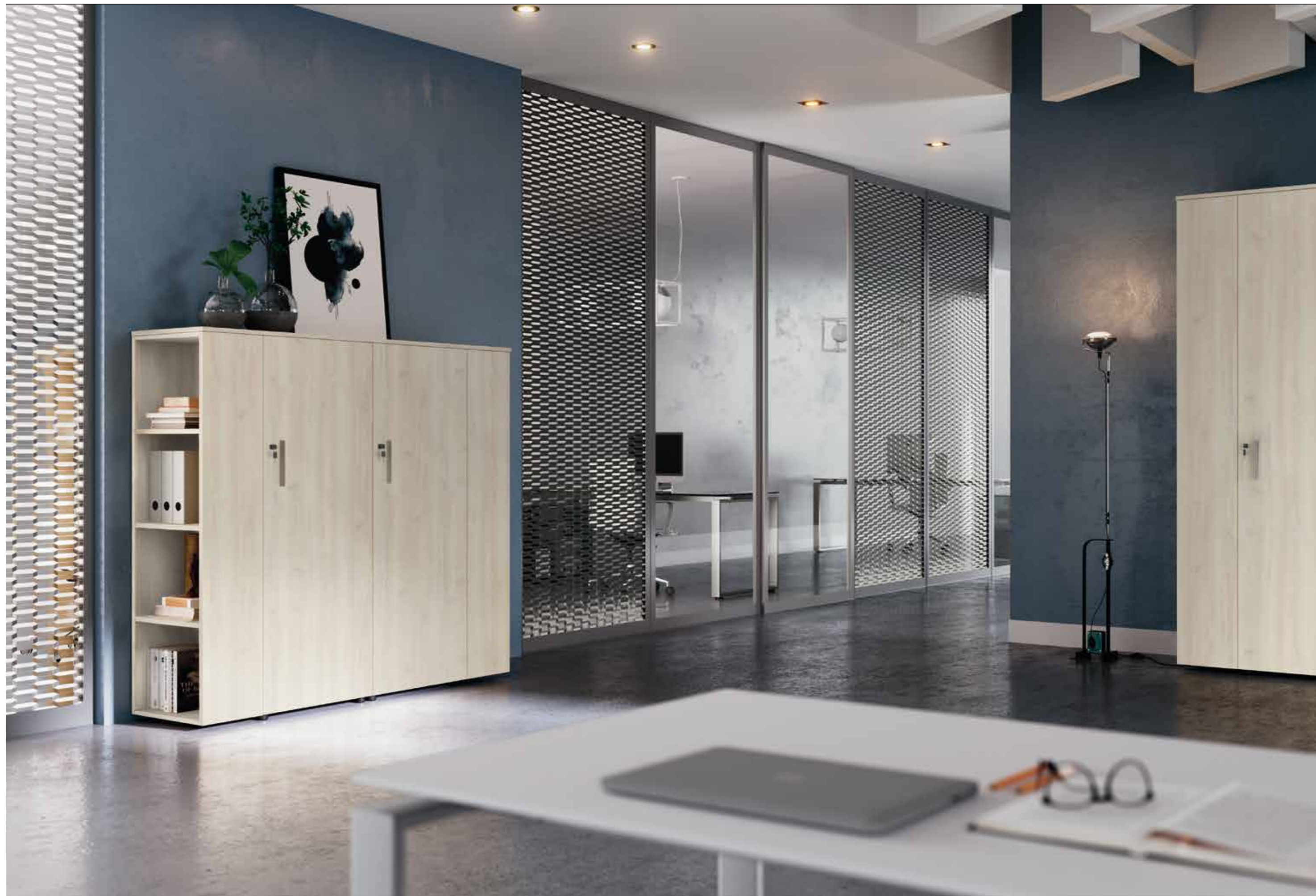
Une vaste gamme de rangements, unique sur le marché, car s'il est important d'avoir un bureau organisé, ce n'est pas toujours simple: ici, la flexibilité, la modulabilité et la personnalisation sont essentielles. Pouvoir choisir parmi tant de solutions facilite et simplifie l'optimisation des volumes.

ARMADIE CONTENITORI

Cupboards and storage units /
Armarios y contenedores /
Armoires et espaces de rangement



























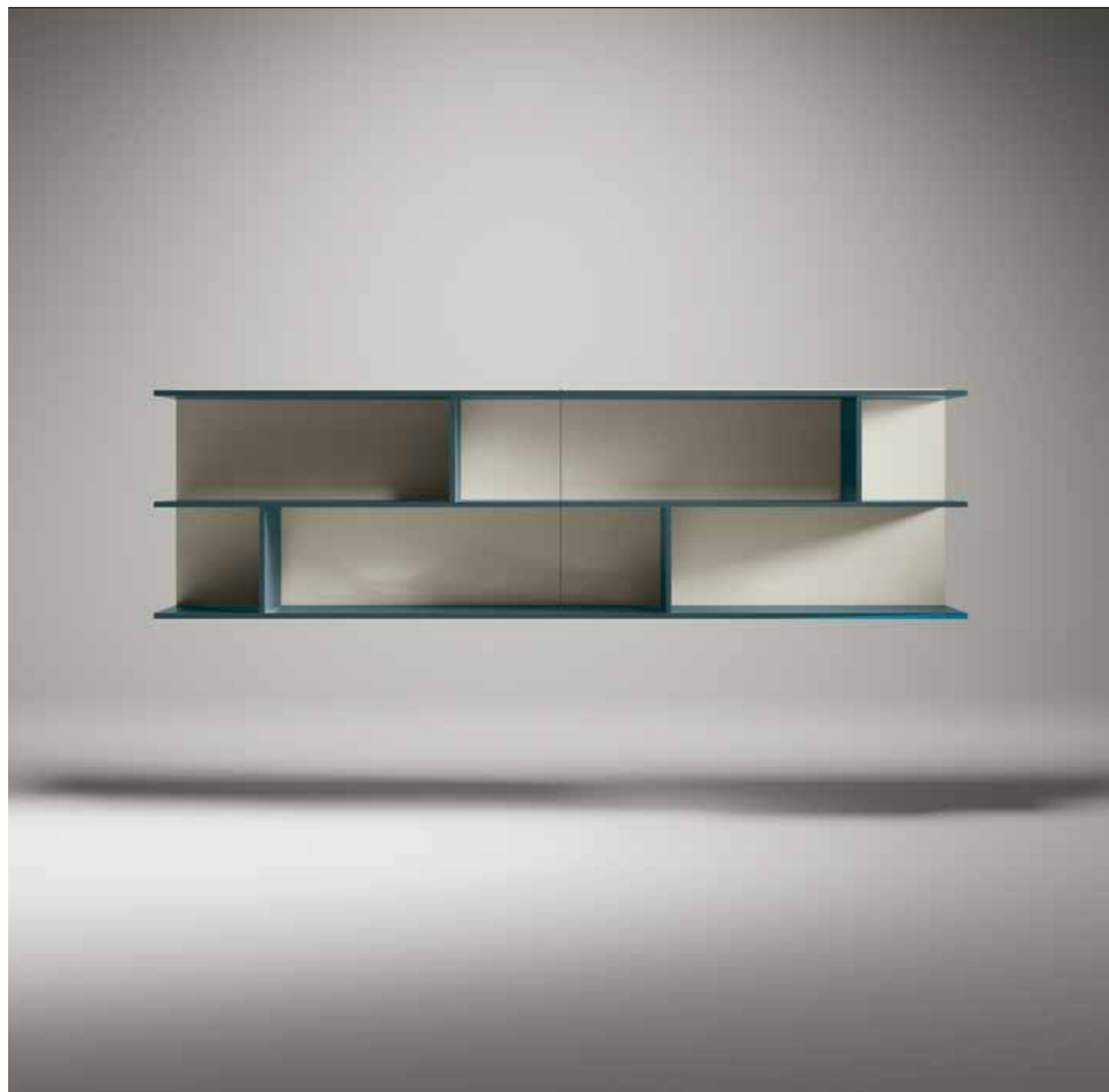














INFORMAZIONI TECNICHE

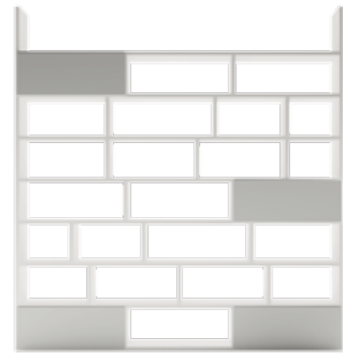
Technical informations /
Datos técnicos /
Renseignements techniques

ARMADIE CONTENITORI

Cupboards and storage units /
Armarios y contenedores /
Armoires et espaces de rangement

Finiture LIBRARY 30

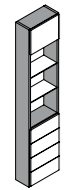
LIBRARY 30 finishes / Acabados LIBRARY 30 / Finitions LIBRARY 30



L	P	H							
30	36,8	38,9	74,1	109,3	144,5	179,7	214,9	250,1	su misura / customized / a la medida / sur mesure
45	36,8	38,9	74,1	109,3	144,5	179,7	214,9	250,1	
60	36,8	38,9	74,1	109,3	144,5	179,7	214,9	250,1	
90	36,8	38,9	74,1	109,3	144,5	179,7	214,9	250,1	
120	36,8	38,9	74,1	109,3	144,5	179,7	214,9	250,1	
150	36,8	38,9	74,1	109,3	144,5	179,7	214,9	250,1	
180	36,8	38,9	74,1	109,3	144,5	179,7	214,9	250,1	
210	36,8	38,9	74,1	109,3	144,5	179,7	214,9	250,1	
240	36,8	38,9	74,1	109,3	144,5	179,7	214,9	250,1	
270	36,8	38,9	74,1	109,3	144,5	179,7	214,9	250,1	

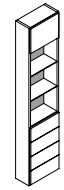
Fianchi e ripiani

Sides and shelves / Laterales y estantes / Lateraux et étagères



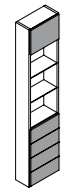
Schiena

Back panel / Respaldo / Panneau arrière



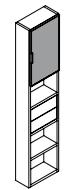
Ante battenti ribalta e vasistas, ante fisse di tamponamento e cassetti in pannello

Panel hinged doors, fixed infill doors and drawers / Puertas batientes, puertas fijas de tamponamiento y cajones de madera / Portes abattantes, portes fixes factices et tiroirs en bois



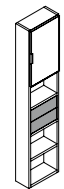
Ante battenti ribalta e vasistas, in vetro con telaio alluminio

Glass hinged door with aluminium frame / Puertas batientes de vidrio con marco aluminio / Portes abattantes en verre avec cadre aluminium



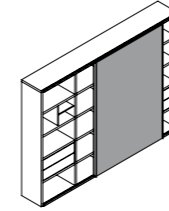
Cassetti interni a filo

Inner flush drawers / Cajones internos al ras / Tiroirs intérieurs à ras

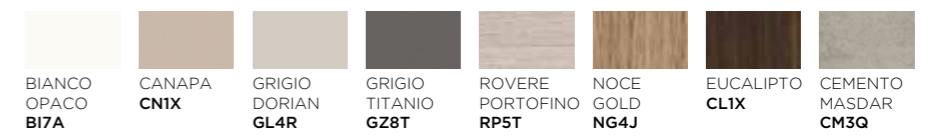


Ante scorrevoli in pannello

Panel sliding doors / Puertas correderas de madera / Portes coulissantes en bois



Pannello /
Panel /
Madera /
Bois

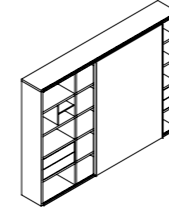


Maniglione /
Big Handle /
Tirador grande /
Grande poignée



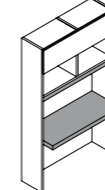
Binari

Tracks / Riele / Rails



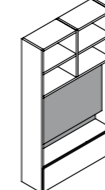
Scrittoio e mostrina

Desk and bezel / Escritorio y chapita / Bureau et cache



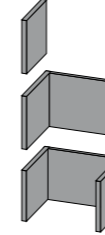
Porta TV

TV support / Porta TV / Support TV



Divisori Alférez, Caballo e Dama in nobilitato

Divider Alférez, Caballo and Dama in melamine / Divisor Alférez, Caballo y Dama de melamina / Séparateur Alférez, Caballo et Dama en mélaminé



Finiture mobili anta battente P 45-35

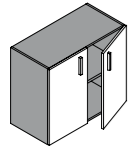
Units hinged door Dpt 45-35 finishes / Acabados muebles puerta batiente P 45-35 / Finitions meubles porte abattante P 45-35



L		P		H				
45	35	45	76,8	115,2	153,6	192	230,4	256
60	35	45	76,8	115,2	153,6	192	230,4	256
90	35	45	76,8	115,2	153,6	192	230,4	256
(*) 180	35	45	76,8	115,2	153,6	192	230,4	256
(*) 270	35	45	76,8	115,2	153,6	192	230,4	256

Cassa e schiena retrofinita

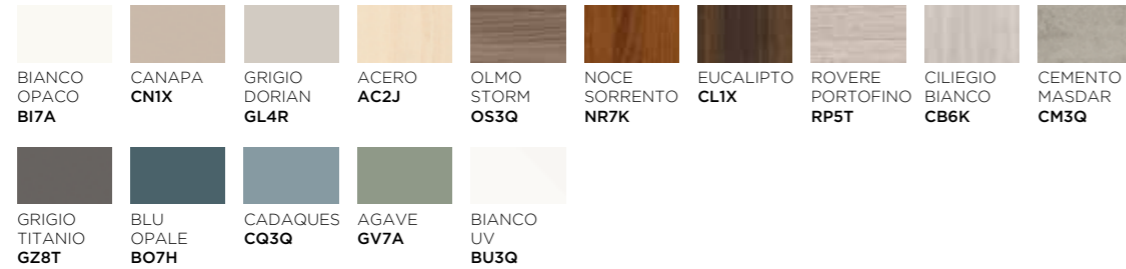
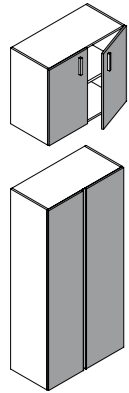
Carcase and finished back / Estructura y trasero de acabado / Structure et arrière de finition



* Cassa L 180/270 solo GL4R
Structure W 180/270 only GL4R
Estructura A 180/270 sólo GL4R
Structure L 180/270 seulement GL4R

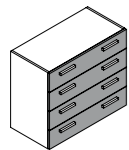
Anta in pannello

Panel door / Puerta de madera / Porte de bois



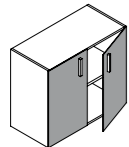
Cassetto e classificatore in pannello

Panel drawer and filing section / Cajon y clasificador de madera / Tiroir et classeur de bois



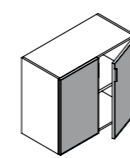
Anta vetro trasparente

Transparent glass door / Puerta de vidrio transparente / Porte en verre transparent

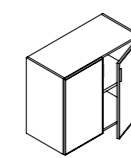
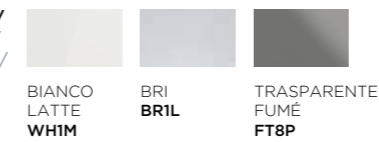


Anta vetro con telaio alluminio

Glass door with aluminium frame / Puerta de vidrio con marco aluminio / Porte en verre avec cadre aluminium



Vetro /
Glass /
Vidrio /
Verre

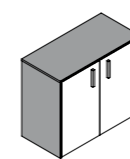


Telaio /
Frame /
Marco /
Cadre



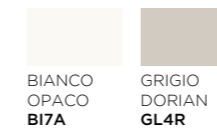
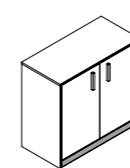
Kit di finitura (top e fianchi)

Finishing kit (top and side panels) / Set de acabado (encimera y paneles laterales) / Kit de finition (top et panneaux latéraux)



Zoccolo

Plinth / Rodapié / Plinthe

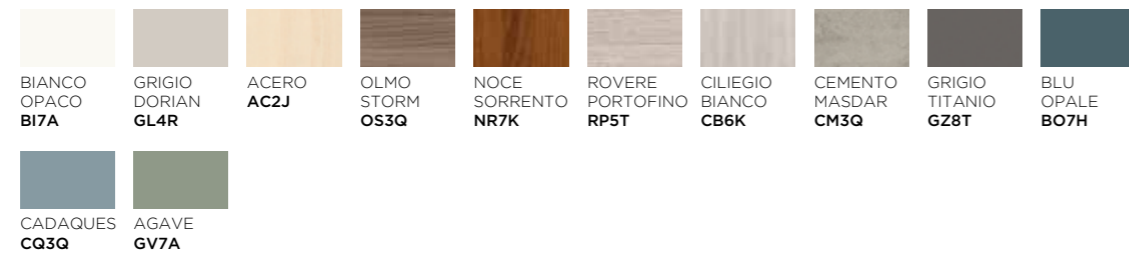
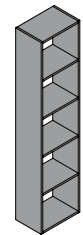


Finiture mobili terminali a giorno

Finishes open end units / Acabados muebles terminales abiertos / Finitions meubles terminaux ouverts



L	P	H		
30	45	153,6	192	230,4



Finiture mobili P 57

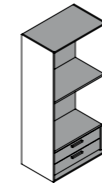
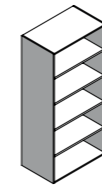
Units Dpt 57 finishes / Acabados muebles P 57 / Finitions meubles P 57 abattante P 45-35



L	P	H
45	57	192
60	57	192
90	57	192

Cassa

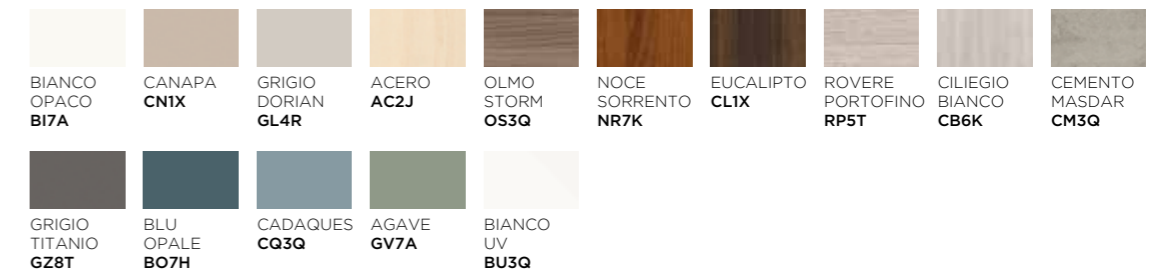
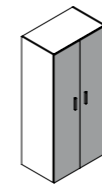
Carcase / Estructura / Structure



BIANCO OPACO **BI7A**

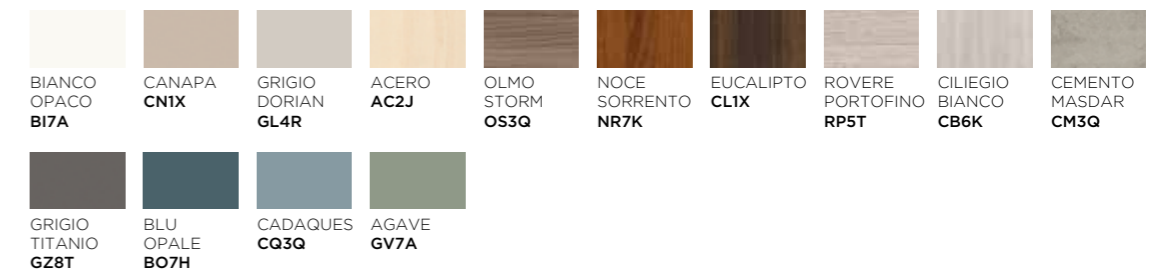
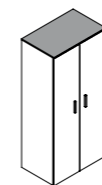
Anta in pannello

Panel door / Puerta de madera / Porte de bois



Top di finitura

Finishing top / Encimera de acabado / Top de finition



Finiture mobili ad angolo anta battente

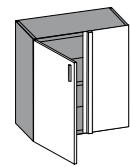
Corner units hinged door finishes / Muebles rinconeros puerta batiente / Meubles d'angle porte abattante



L	P	H					
90,0	35	76,8	115,2	153,6	192	230,4	256
93,6	45	76,8	115,2	153,6	192	230,4	256

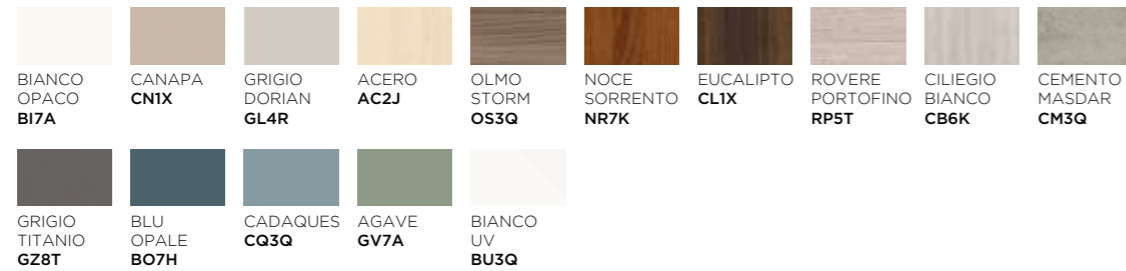
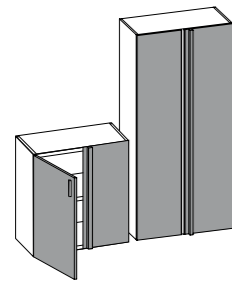
Cassa

Carcase / Estructura / Structure



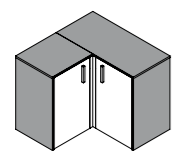
Ante in pannello e ringrosso

Panel doors and timber strip / Puertas de madera y protuberancia / Portes de bois et bossage



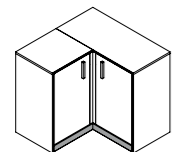
Kit di finitura (top e fianchi)

Finishing kit (top and side panels) / Set de acabado (encimera y paneles laterales) / Kit de finition (top et panneaux latéraux)



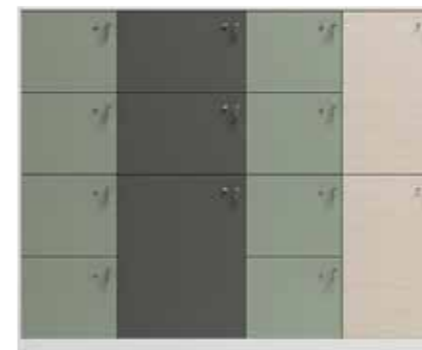
Zoccolo

Plinth / Rodapié / Plinthe



Finiture LOCKERS

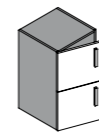
LOCKERS finishes / Acabados LOCKERS / Finitions LOCKERS



L	P	H				
45	35	45	76,8	115,2	153,6	192
60	35	45	76,8	115,2	153,6	192

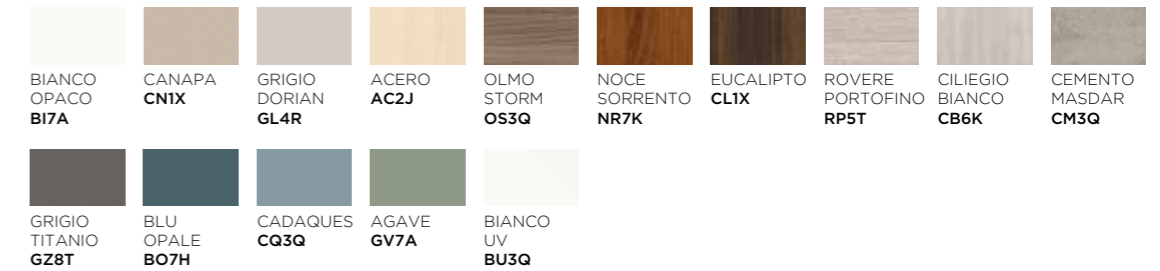
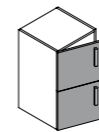
Cassa e schiena retrofinita

Carcase and finished back / Estructura y trasero de acabado / Structure et arrière de finition



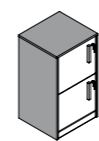
Anta in pannello

Panel door / Puerta de madera / Porte de bois



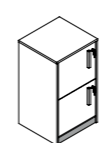
Kit di finitura (top e fianchi)

Finishing kit (top and side panels) / Kit de acabado (encimera y paneles laterales) / Kit de finition (top et panneaux latéraux)



Zoccolo

Plinth / Rodapié / Plinthe



Finiture mobili anta scorrevole

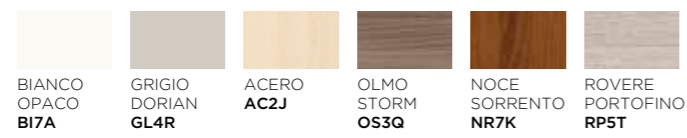
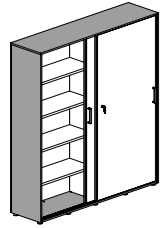
Units sliding door finishes / Acabados muebles puerta corredera / Finitions meubles porte coulissante



L	P	H			
179	45,6	81,3	119,7	158,1	196,5

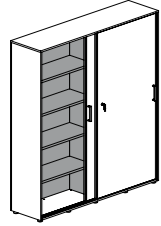
Cassa

Carcase / Estructura / Structure



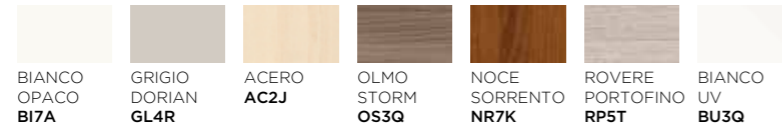
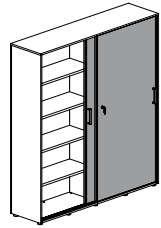
Interno cassa e schiena retrofinita

Carcase interior and finished back panel / Interior estructura y respaldo de acabado / Intérieur structure et arrière de finition



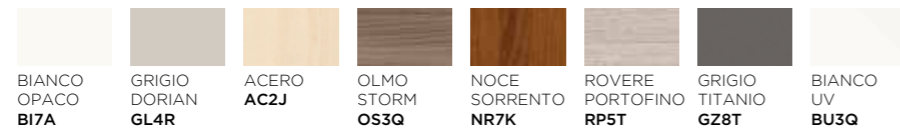
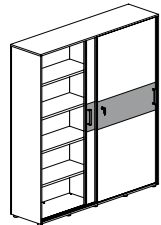
Anta in pannello

Panel door / Puerta de madera / Porte de bois



Inserto anta

Insert for door / Aplicación para puerta / Élément pour porte



Finiture madie a terra DELTA

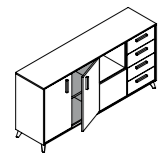
DELTA sideboards finishes / Acabados aparadores DELTA / Finitions buffets DELTA



L	P	H
93,8	45,6	91,4
108,8	45,6	91,4
123,8	45,6	91,4
138,8	45,6	91,4
153,8	45,6	91,4
168,8	45,6	91,4
183,8	45,6	91,4
213,8	45,6	91,4
228,8	45,6	91,4
243,8	45,6	91,4

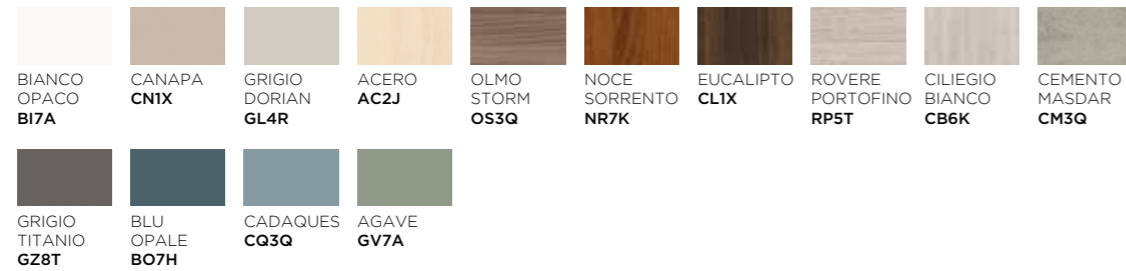
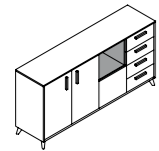
Casse interne

Inner carcasses / Estructuras internas / Structures internes



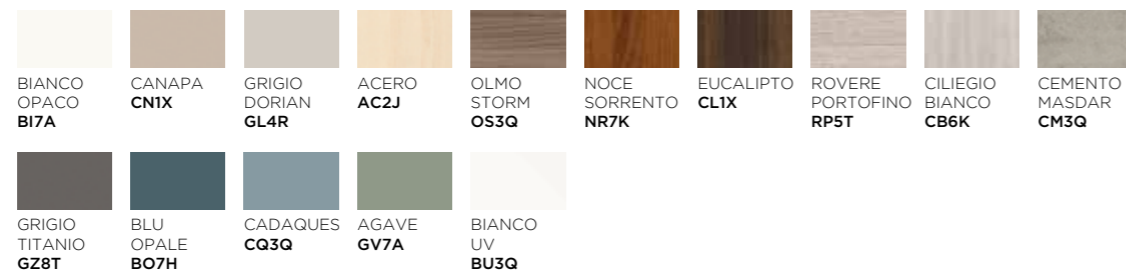
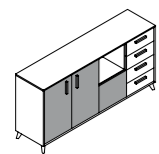
Elemento Delta

Delta element / Elemento Delta / Élément Delta



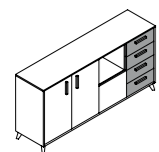
Anta in pannello

Panel door / Puerta de madera / Porte en bois



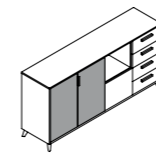
Cassetto in pannello

Panel drawer / Cajon de madera / Tiroir en bois



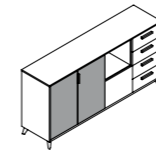
Anta vetro trasparente

Transparent glass door / Puerta de vidrio transparente / Porte en verre transparent



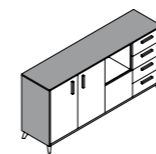
Ante in vetro telaio alluminio

Glass doors aluminium frame / Puertas de vidrio marco aluminio / Portes en verre cadre aluminium



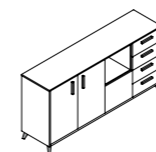
Cassa esterna

External carcass / Estructura externa / Structure externe



Piedi Delta

Delta feet / Pies Delta / Pieds Delta



Finiture madie sospese DELTA

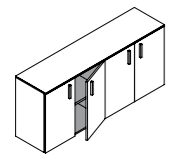
DELTA sideboards finishes / Acabados aparadores DELTA / Finitions buffets DELTA

L	P		H
45	35,6	45,6	76,8
60	35,6	45,6	76,8
90	35,6	45,6	76,8



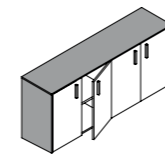
Casse

Carcases / Estructuras / Structures



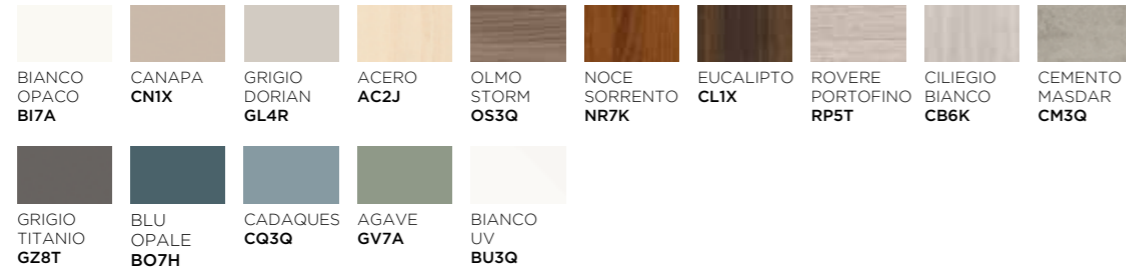
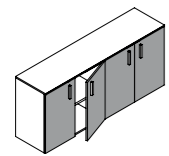
Kit di finitura (top + fianchi)

Finishing kit (top + side panels) / Kit de acabado (encimera + laterales) / Kit de finition (top + lateraux)



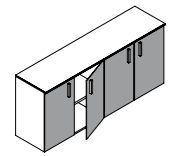
Anta in pannello

Panel door / Puerta de madera / Porte en bois



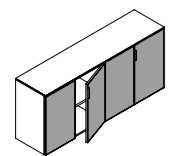
Anta vetro trasparente

Transparent glass door / Puerta de vidrio transparente / Porte en verre transparent



Ante in vetro telaio alluminio

Glass doors aluminium frame / Puertas de vidrio marco aluminio / Portes en verre cadre aluminium



Finiture madie GRAVITY

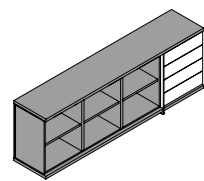
GRAVITY sideboards finishes / Acabados aparadores GRAVITY / Finitions buffets GRAVITY

L	P	H
126	49,7	155
184	49,7	85
244	49,7	85



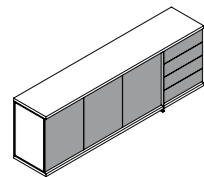
Casse

Carcases / Estructuras / Structures



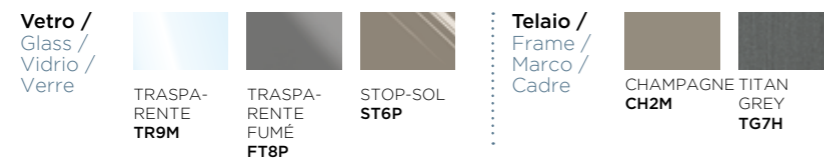
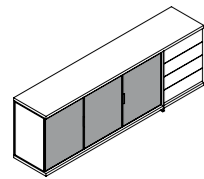
Ante e cassetti in pannello

Panel doors and drawers / Puertas y cajones de madera / Portes et tiroirs en bois



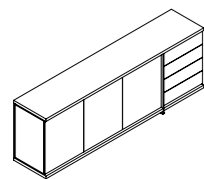
Ante in vetro telaio alluminio

Glass doors aluminium frame / Puertas de vidrio marco aluminio / Portes en verre cadre aluminium



Piede

Foot / Pie / Pied



Finiture madie SIGMA

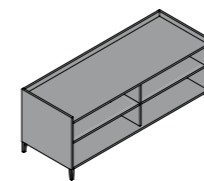
SIGMA sideboards finishes / Acabados aparadores SIGMA / Finitions buffets SIGMA

L	P	H
165	59,7	65,2
169		
184		



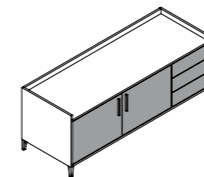
Casse

Carcases / Estructuras / Structures



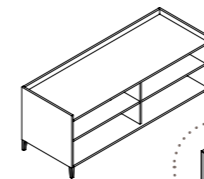
Facciate

Fronts / Frentes / Façades



Piedi Sigma

Sigma feet / Pies Sigma / Pieds Sigma



Finiture pannelli attrezzati

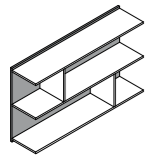
Equipped panels finishes / Acabados paneaux équipés / Finitions paneles equipados



L	P	H
60	31,5	80
80	31,5	80
90	31,5	80
100	31,5	80
120	31,5	80
135	31,5	80

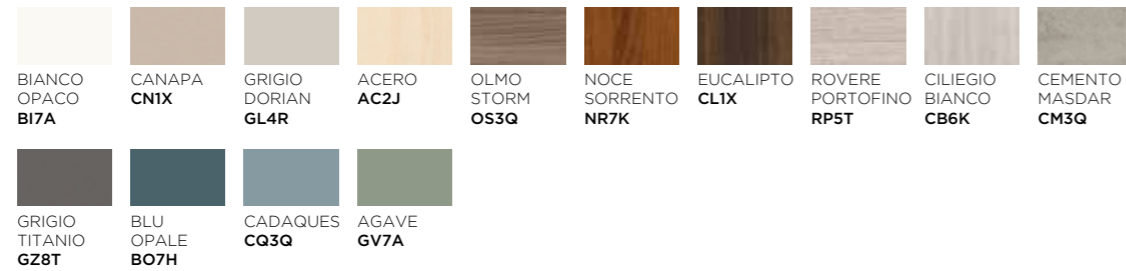
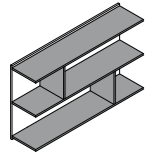
Schiena

Back panel / Panel posterior / Panneau arrière



Mensole e tramezzi

Shelves and partitions / Estantes y particiones / Étagère et cloisons



Finiture modulo sospeso e a terra

Wall-mounted and floor-standing modules finishes / Acabados módulos suspendido y de suelo / Finitions modules suspendu et au sol



Modulo sospeso
Wall-mounted modules
Módulos suspendidos
Modules suspendus

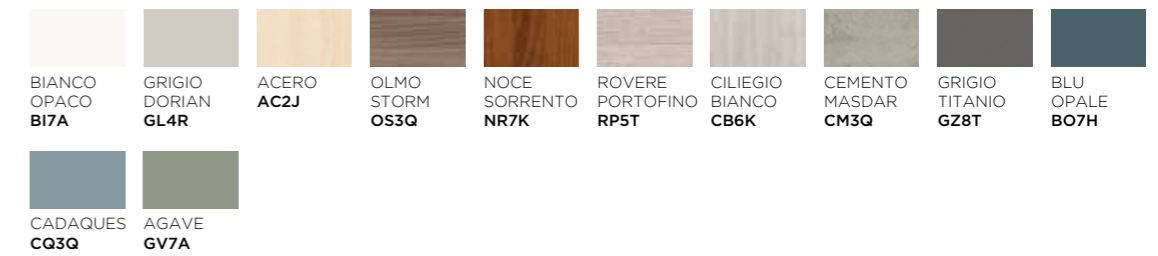
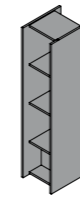
L	P	H
45	37	153,2

Modulo a terra
Floor-standing module
Módulo de suelo
Module au sol

L	Sp	H
60	3,5	212,1 247,3

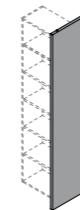
Modulo sospeso

Wall-mounted module / Módulo suspendido / Module suspendu



Modulo a terra

Floor-standing module / Módulo de suelo / Module au sol



Finiture pensili

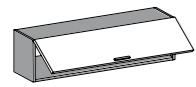
Wall units finishes / Acabados colgantes / Finitions meubles hauts



L	P	H	
30	36,8	105,6	140,8
90	36,8	35,2	-
120	36,8	35,2	-
135	36,8	35,2	-
180	36,8	35,2	-

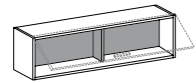
Cassa

Carcase / Estructura / Structure



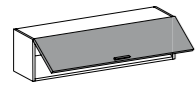
Interno Cassa

Carcase interior / Interior de la estructura / Intérieur de la structure



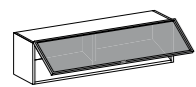
Anta in pannello

Panel door / Puerta de madera / Porte en bois



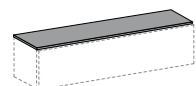
Ante in vetro telaio alluminio

Glass doors aluminium frame / Puertas de vidrio marco aluminio / Portes en verre cadre aluminium



Top di finitura (opzionale)

Finishing top (optional) / Encimera de acabado (opcional) / Top de finition (optionnel)



Elemento verticale e piano d'appoggio ODEON

Vertical element and ODEON top / Elemento Vertical y encimera de apoyo ODEON / Élément Vertical et top d'appui ODEON



Elemento verticale
Vertical element
Elemento Vertical
Élément Vertical

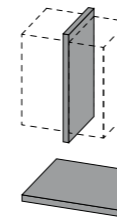
L	P	H
6	49	150

Piano Odeon
Odeon top
Encimera Odeon
Top Odeon

L	P	H
150	49	6
180		

Finiture

Finish / Acabado / Finition

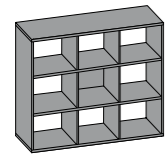


Finitura libreria MILTON

MILTON bookcase finish / Acabado estantería MILTON / Finition bibliothèque MILTON



L	P	H	
77,5	30,7	78	115,8
115,3	30,7	78	115,8



BIANCO
OPACO
B17A

Libreria UP & UP

UP & UP bookshelf / Libreria UP & UP / Bibliothèque UP & UP



Con montanti SOSPESI
With HANGING uprights
Con montantes SUSPENDIDOS
Avec montants SUSPENDUS

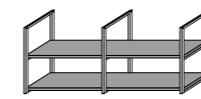
L	P	H
su misura / customized / a la medida / sur mesure	30,1	34
		42,5
		66
		98
		130
34 / 360		

Con montanti A TERRA
With uprights resting ON GROUND
Con montantes DE PISO
Avec montants AU SOL

L	P	H
su misura / customized / a la medida / sur mesure	30,1	160,8
		192,8
		224,8
		256,8
34 / 360		

Mensole

Shelves / Estantes / Etagères



BIANCO
OPACO
B17A

CANAPA
CN1X

GRIGIO
DORIAN
GL4R

ACERO
AC2J

OLMO
STORM
OS3Q

NOCE
SORRENTO
NR7K

EUCALIPTO
CL1X

ROVERE
PORTOFINO
RP5T

CILIEGIO
BIANCO
CB6K

CEMENTO
MASDAR
CM3Q

GRIGIO
TITANIO
GZ8T

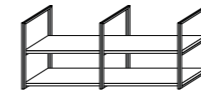
BLU
OPALE
BO7H

CADAQUES
CQ3Q

AGAVE
GV7A

Montanti

Uprights / Montantes / Montants



GRIGIO
TITANIO
GZ8T

Finiture cassettiere su ruote

Casters chest of drawers finishes / Acabados cajoneras con ruedas / Finitions coffre des tiroirs sur roulettes



Cassettiere in legno
Wooden chest of drawers
Cajoneras de madera
Coffre des tiroirs en bois

L	P	H
41,8	54,6	53,8
41,8	54,6	59,6

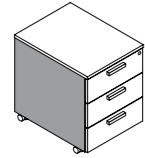
Cassettiere metalliche
Metal chest of drawers
Cajoneras de metal
Coffre des tiroirs en metal

L	P	H
42,5	53	58

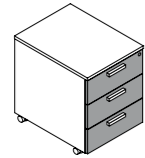
Cassettiere in legno

Wooden chest of drawers / Cajoneras de madera / Coffre des tiroirs en bois

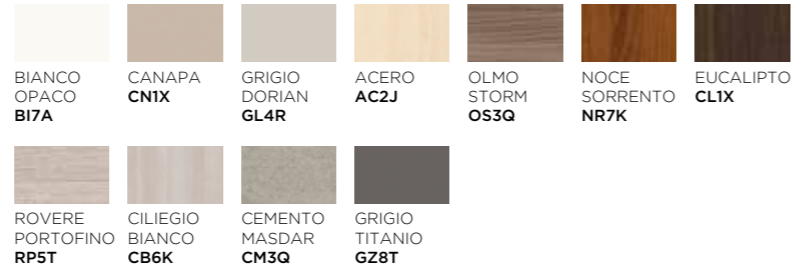
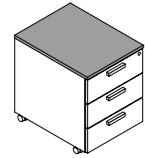
Cassa /
Carcase /
Estructura /
Structure



Facciate /
Fronts /
Frentes /
Façades



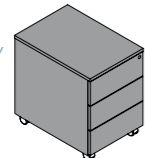
Top /
Top /
Encimera /
Top



Cassettiere in metallo

Metal chest of drawers / Cajoneras de metal / Coffre des tiroirs en métal

Cassa, Facciate, Top /
Carcase, Fronts, Top /
Estructura, Frentes, Encimera /
Structure, Façades, Top



Maniglie

Handles / Tiradores / Poignées

U13G
P11



Legno / Wood / Madera / Bois




ALLUMINIO AL1A BIANCO OPACO BI7A CILIEGIO BIANCO CB6K GRIGIO TITANIO GZ8T

U16S
PIN


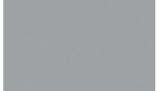
Alluminio / Aluminium / Aluminium

ALLUMINIO SPAZZOLATO LM7A NERO SPAZZOLATO NR4B

U00V
LIG

ABS

ALLUMINIO AL1A

U15A
BIS

Alluminio / Aluminium / Aluminium




ALLUMINIO AL1A BIANCO OPACO BI7A

U11E
PUL

Legno / Wood / Madera / Bois




BIANCO OPACO BI7A GRIGIO DORIAN GL4R OLMO STORM OS3Q EUCALIPTO CL1X
CILIEGIO BIANCO CB6K CEMENTO MASDAR CM3Q GRIGIO TITANIO GZ8T BLU OPALE BO7H
CADAQUES CQ3Q AGAVE GV7A CANAPA CN1X

U02B
SNIP

Alluminio / Aluminium / Aluminium




ALLUMINIO AL1A

U09Z
RAN

Alluminio / Aluminium / Aluminium




ALLUMINIO AC4Z

U12F
VIM


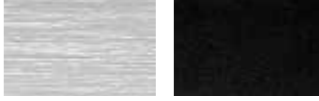
Legno / Wood / Madera / Bois




BIANCO OPACO BI7A GRIGIO DORIAN GL4R OLMO STORM OS3Q EUCALIPTO CL1X
CILIEGIO BIANCO CB6K CEMENTO MASDAR CM3Q GRIGIO TITANIO GZ8T BLU OPALE BO7H
CADAQUES CQ3Q AGAVE GV7A CANAPA CN1X

U17V
BUL

Alluminio / Aluminium / Aluminium

ALLUMINIO SPAZZOLATO LM7A NERO SPAZZOLATO NR4B

V20A
PUSH-PULL

Alluminio / Aluminium / Aluminium




ALLUMINIO AL1A

U16M
JOY

Alluminio / Aluminium / Aluminium




ALLUMINIO AL1A CHAMPAGNE CH2M TITAN GREY TG7H

Maniglia Gola /
Groove handle /
Tirador Ranura /
Poignée Gorge




BIANCO OPACO BI7A GRIGIO TITANIO GZ8T

Certificazioni

Certifications / Certificaciones / Certifications

ISO 14001



ISO 9001



Tutte le misure all'interno del listino sono espresse in centimetri se non diversamente indicato.

All measures within the price list are expressed in centimeters unless otherwise indicated.

Todas las medidas dentro de la lista de precios se expresan en centímetros a menos que se indique otra.

Toutes les mesures dans la liste de prix sont exprimées en centimètres, sauf indication contraire.

Tutti i nostri pannelli sono a basso contenuto di formaldeide, con emissioni inferiori al 50% del valore di classificazione E1 indicato nella norma UNI EN 13986 allegato B e conformi ai limiti di emissione previsti dal U.S. EPA TSCA Title VI (CARB P2).

All our panels have a low formaldehyde content, with emissions lower than 50% of the E1 classification value regulated by the UNI EN 13986 annex B and in compliance with the emission limits set by the U.S. EPA TSCA Title VI (CARB P2).

Todos nuestros paneles tienen un bajo contenido de formaldehído, con emisiones inferiores al 50% del valor de clasificación E1 indicado en la norma UNI EN 13986 anexo B y cumplen con los límites de emisión establecidos por los EE.UU., EPA TSCA Título VI (CARB P2).

Tous nos panneaux ont une faible teneur en formaldéhyde, avec des émissions inférieures à 50% de la valeur de classification E1 indiquée dans la norme UNI EN 13986 annexe B et respectent les limites d'émission prévus par la réglementation américaine EPA TSCA Titre VI (CARB P2).



Richiedi i nostri prodotti con il marchio FSC®
Request our FSC® branded products
Demandez nos produits de marque FSC®
Solicite nuestros productos de marca FSC®

OFFIC'E'

Colombini S.p.A.

Azienda certificata UNI EN ISO 9001
Azienda certificata UNI EN ISO 14001
Strada Ca' Valentino, 124
47891 - Falciano - Repubblica di San Marino

Telefono da Italia 0549 943 573
International calls +378 0549 975 948

www.officicolombinigroup.com